

Vis à œil • DIN 444, forme B
EH 22980.



Description produit

Vis à œil similaires à la norme DIN 444, qualité acier 8.8. La version en inox A2-50 offre une résistance à la traction de 500 N/mm² min.

Matières

- acier traité, qualité 8.8, noir
- inox 1.4301

Plus d'informations

Notes

Réalisations spéciales sur demande.

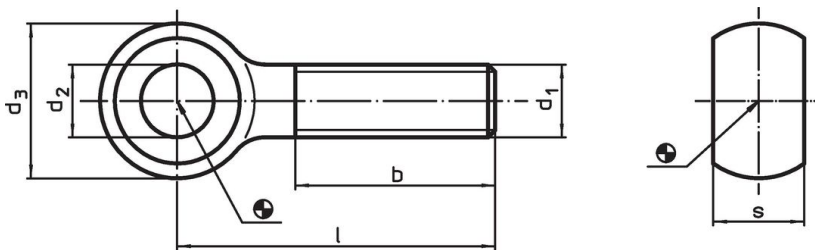
Références

Moments de serrage - se reporter à la fiche de renseignements techniques -


Autres produits


- Vis à œil, DIN 444, forme B, qualité 8.8 version de précision

Plan



Informations détaillées

| d ₁ | l | Dimensions d ₂ H9 [mm] | d ₃ | b | s |  [g] | Référence article |
|---------------------|-----|--|----------------|----|----|--|----------------------------|
| acier traité | | | | | | | |
| M 5 | 25 | 5 | 12 | 16 | 6 | 5,6 | 22980.0202 |
| M 5 | 30 | 5 | 12 | 16 | 6 | 6,4 | 22980.0203 |
| M 5 | 35 | 5 | 12 | 16 | 6 | 7,1 | 22980.0204 |
| M 5 | 40 | 5 | 12 | 16 | 6 | 7,9 | 22980.0205 |
| M 6 | 30 | 6 | 14 | 18 | 7 | 9,5 | 22980.0212 |
| M 6 | 40 | 6 | 14 | 18 | 7 | 11,0 | 22980.0214 |
| M 6 | 50 | 6 | 14 | 18 | 7 | 14,0 | 22980.0216 |
| M 6 | 60 | 6 | 14 | 18 | 7 | 16,0 | 22980.0218 |
| M 6 | 80 | 6 | 14 | 18 | 7 | 20,0 | 22980.0222 |
| M 8 | 40 | 8 | 18 | 22 | 9 | 22,0 | 22980.0232 |
| M 8 | 50 | 8 | 18 | 22 | 9 | 26,0 | 22980.0234 |
| M 8 | 60 | 8 | 18 | 22 | 9 | 30,0 | 22980.0236 |
| M 8 | 80 | 8 | 18 | 22 | 9 | 37,0 | 22980.0240 |
| M 8 | 100 | 8 | 18 | 22 | 9 | 44,0 | 22980.0244 |
| M10 | 50 | 10 | 20 | 26 | 12 | 40,0 | 22980.0252 |
| M10 | 60 | 10 | 20 | 26 | 12 | 43,0 | 22980.0254 |
| M10 | 75 | 10 | 20 | 26 | 12 | 51,0 | 22980.0257 |
| M10 | 100 | 10 | 20 | 26 | 12 | 67,0 | 22980.0262 |
| M10 | 120 | 10 | 20 | 26 | 12 | 72,0 | 22980.0266 |
| M12 | 50 | 12 | 25 | 30 | 14 | 59,0 | 22980.0272 |
| M12 | 60 | 12 | 25 | 30 | 14 | 68,0 | 22980.0274 |
| M12 | 80 | 12 | 25 | 30 | 14 | 85,0 | 22980.0278 |
| M12 | 100 | 12 | 25 | 30 | 14 | 102,0 | 22980.0282 |
| M12 | 120 | 12 | 25 | 30 | 14 | 119,0 | 22980.0286 |
| M16 | 60 | 16 | 32 | 38 | 17 | 128,0 | 22980.0292 |
| M16 | 80 | 16 | 32 | 38 | 17 | 159,0 | 22980.0294 |

| d ₁ | l | Dimensions | | | | s |  | Référence article |
|----------------|-----|------------------------------|----------------|----|-----|-------|---|-------------------|
| | | d ₂ H9 [mm] | d ₃ | b | [g] | | | |
| M16 | 100 | 16 | 32 | 38 | 17 | 190,0 | 22980.0298 | |
| M16 | 120 | 16 | 32 | 38 | 17 | 220,0 | 22980.0302 | |
| M16 | 150 | 16 | 32 | 44 | 17 | 265,0 | 22980.0308 | |
| M20 | 100 | 18 | 40 | 46 | 22 | 323,0 | 22980.0312 | |
| M20 | 120 | 18 | 40 | 46 | 22 | 373,0 | 22980.0316 | |
| M20 | 160 | 18 | 40 | 52 | 22 | 466,0 | 22980.0324 | |
| M20 | 200 | 18 | 40 | 52 | 22 | 562,0 | 22980.0332 | |
| M24 | 100 | 22 | 45 | 54 | 25 | 443,0 | 22980.0342 | |
| M24 | 120 | 22 | 45 | 54 | 25 | 512,0 | 22980.0346 | |
| M24 | 160 | 22 | 45 | 60 | 25 | 649,0 | 22980.0354 | |
| M24 | 200 | 22 | 45 | 60 | 25 | 787,0 | 22980.0362 | |
| inox | | | | | | | | |
| M 5 | 25 | 5 | 12 | 16 | 6 | 5,6 | 22980.0402 | |
| M 5 | 30 | 5 | 12 | 16 | 6 | 6,4 | 22980.0403 | |
| M 5 | 35 | 5 | 12 | 16 | 6 | 7,1 | 22980.0404 | |
| M 5 | 40 | 5 | 12 | 16 | 6 | 7,9 | 22980.0405 | |
| M 6 | 30 | 6 | 14 | 18 | 7 | 9,5 | 22980.0412 | |
| M 6 | 40 | 6 | 14 | 18 | 7 | 11,0 | 22980.0414 | |
| M 6 | 50 | 6 | 14 | 18 | 7 | 14,0 | 22980.0416 | |
| M 6 | 60 | 6 | 14 | 18 | 7 | 16,0 | 22980.0418 | |
| M 6 | 80 | 6 | 14 | 18 | 7 | 20,0 | 22980.0422 | |
| M 8 | 40 | 8 | 18 | 22 | 9 | 22,0 | 22980.0432 | |
| M 8 | 50 | 8 | 18 | 22 | 9 | 26,0 | 22980.0434 | |
| M 8 | 60 | 8 | 18 | 22 | 9 | 30,0 | 22980.0436 | |
| M 8 | 80 | 8 | 18 | 22 | 9 | 37,0 | 22980.0440 | |
| M 8 | 100 | 8 | 18 | 22 | 9 | 44,0 | 22980.0444 | |
| M10 | 50 | 10 | 20 | 26 | 12 | 40,0 | 22980.0452 | |
| M10 | 60 | 10 | 20 | 26 | 12 | 43,0 | 22980.0454 | |
| M10 | 75 | 10 | 20 | 26 | 12 | 51,0 | 22980.0457 | |
| M10 | 100 | 10 | 20 | 26 | 12 | 67,0 | 22980.0462 | |
| M10 | 120 | 10 | 20 | 26 | 12 | 72,0 | 22980.0466 | |
| M12 | 50 | 12 | 25 | 30 | 14 | 59,0 | 22980.0472 | |
| M12 | 60 | 12 | 25 | 30 | 14 | 68,0 | 22980.0474 | |
| M12 | 80 | 12 | 25 | 30 | 14 | 85,0 | 22980.0478 | |
| M12 | 100 | 12 | 25 | 30 | 14 | 102,0 | 22980.0482 | |
| M12 | 120 | 12 | 25 | 30 | 14 | 119,0 | 22980.0486 | |
| M16 | 60 | 16 | 32 | 38 | 17 | 128,0 | 22980.0492 | |
| M16 | 80 | 16 | 32 | 38 | 17 | 159,0 | 22980.0494 | |
| M16 | 100 | 16 | 32 | 38 | 17 | 190,0 | 22980.0498 | |
| M16 | 120 | 16 | 32 | 38 | 17 | 220,0 | 22980.0502 | |
| M16 | 150 | 16 | 32 | 44 | 17 | 265,0 | 22980.0508 | |
| M20 | 100 | 18 | 40 | 46 | 22 | 323,0 | 22980.0512 | |
| M20 | 120 | 18 | 40 | 46 | 22 | 373,0 | 22980.0516 | |
| M20 | 160 | 18 | 40 | 52 | 22 | 466,0 | 22980.0524 | |
| M20 | 200 | 18 | 40 | 52 | 22 | 562,0 | 22980.0532 | |
| M24 | 100 | 22 | 45 | 54 | 25 | 443,0 | 22980.0542 | |
| M24 | 120 | 22 | 45 | 54 | 25 | 512,0 | 22980.0546 | |
| M24 | 160 | 22 | 45 | 60 | 25 | 649,0 | 22980.0554 | |
| M24 | 200 | 22 | 45 | 60 | 25 | 787,0 | 22980.0562 | |

Conformité

Conforme à la directive RoHS

Conforme à la directive 2011/65/CE et à la directive 2015/863.

Ne contient pas de substances SVHC

Pas de substances SVHC avec une teneur supérieure à 0,1% m/m – Liste SVHC [REACH] au 27.06.2024.

Ne contient pas de substances de la Proposition 65

Aucune des substances de la Proposition 65 présente.

<https://www.P65Warnings.ca.gov/>

Ne contient pas de minerais de la guerre

Ce produit ne contient pas de substances classées comme "minerais de la guerre" telles que le tantale, l'étain, l'or ou le wolfram provenant de République démocratique du Congo ou de pays frontaliers.