

## Patins articulés

EH 22590.



### Description produit

Les patins articulés peuvent être utilisés comme pieds de machines ou butée. Les surfaces d'appuis non parallèles peuvent être compensées jusqu'à 15°.

### Matières

#### Rotule

- acier traité, bruni
- inox 1.4305

#### Rotule avec axe

- acier traité, bruni
- inox 1.4305

#### Contre-écrou

- acier, bruni, ISO 4032
- acier, bruni, DIN 934
- inox A2, ISO 4032
- inox A2, DIN 934

#### Patin

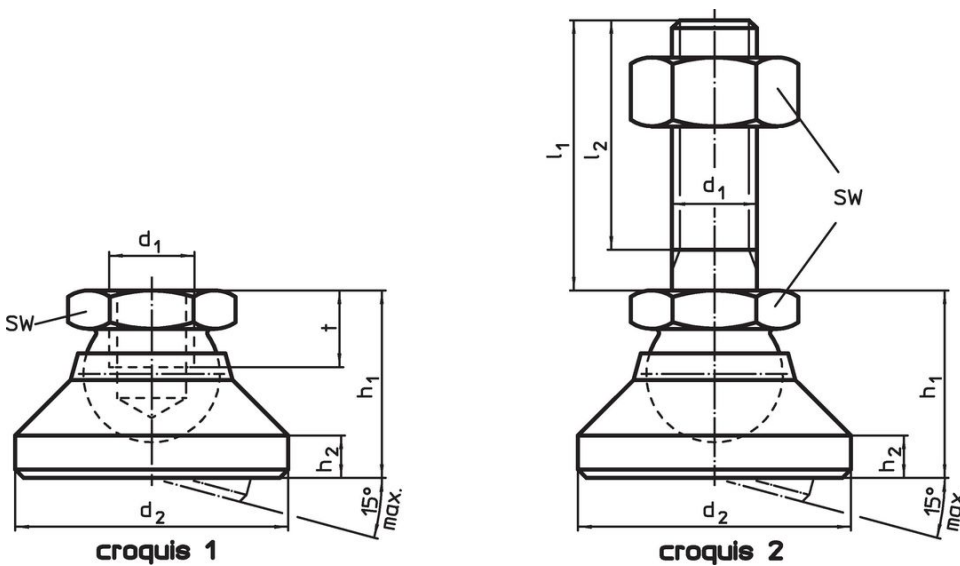
- acier traité, bruni
- inox 1.4305
- thermoplastique (POM), blanc

### Plus d'informations

#### Notes



Pour les versions  $d_1 = M10$  et  $M12$  le contre-écrou correspond à la norme DIN 934.

### Plan

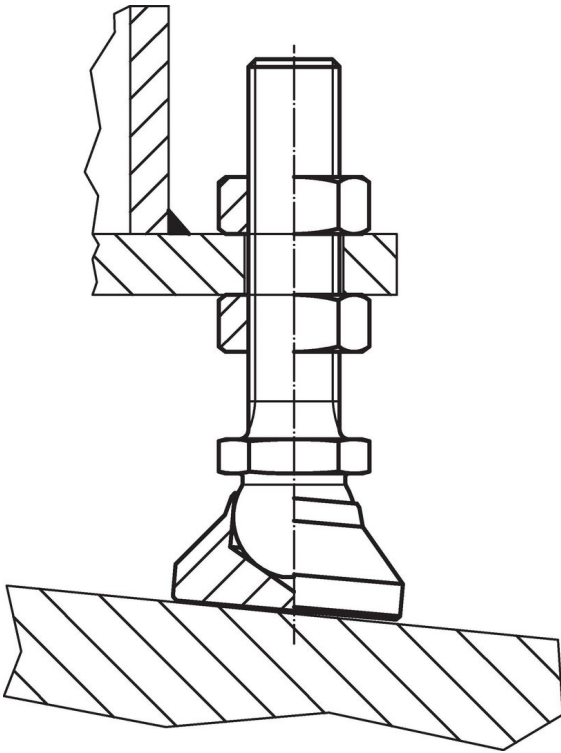


### Informations détaillées

| d <sub>1</sub>                                   | Dimensions     |                |                |                |                |      | SW   | Charge admissible pour utilisation statique max. [kN] | Température |      | Référence article |            |
|--|----------------|----------------|----------------|----------------|----------------|------|------|---|-------------|------|-------------------|------------|
|  | l <sub>1</sub> | d <sub>2</sub> | l <sub>2</sub> | h <sub>1</sub> | h <sub>2</sub> | t    |      |   | min.        | max. |                   |            |
| [mm]   |                |                |                |                |                |      | [mm] | [kN]  | [°C]        |      | [g]               |            |
| <b>patin et rotule – croquis 1, acier traité</b> |                |                |                |                |                |      |      |   |             |      |                   |            |
| M 6  | –              | 20             | –              | 14             | 2,5            | 5,0  | 10   | 10  | –           | 250  | 15,0              | 22590.0006 |
| M 8  | –              | 25             | –              | 18             | 4,0            | 7,0  | 13   | 18  | –           | 250  | 33,0              | 22590.0008 |
| M10  | –              | 32             | –              | 22             | 5,0            | 9,0  | 17   | 20  | –           | 250  | 67,0              | 22590.0010 |
| M12  | –              | 40             | –              | 26             | 6,0            | 11,0 | 19   | 35  | –           | 250  | 112,0             | 22590.0012 |
| M16  | –              | 50             | –              | 32             | 7,0            | 13,5 | 24   | 45  | –           | 250  | 254,0             | 22590.0016 |
| M20  | –              | 60             | –              | 42             | 8,0            | 17,0 | 30   | 55  | –           | 250  | 451,0             | 22590.0020 |
| M24  | –              | 60             | –              | 45             | 9,5            | 19,0 | 36   | 65  | –           | 250  | 498,0             | 22590.0024 |

| d <sub>1</sub>  | Dimensions     |                |                |                     |                |      | SW<br>[mm] | Charge admissible<br>pour utilisation<br>statique<br>max.<br>[kN] | <br>min.   max.<br>[°C] |     | <br>[g] | Référence<br>article |
|---|----------------|----------------|----------------|---------------------|----------------|------|------------|---|--|-----|--|----------------------|
|   | l <sub>1</sub> | d <sub>2</sub> | l <sub>2</sub> | h <sub>1</sub><br>~ | h <sub>2</sub> | t    |            |   |  |     |  |                      |
| [mm]  |                |                |                |                     |                |      |            |   |  |     |  |                      |
| <b>patin et rotule – croquis 1, inox</b>  |                |                |                |                     |                |      |            |   |  |     |  |                      |
| M 6   | –              | 20             | –              | 14                  | 2,5            | 5,0  | 10         | 8   | –  | 250 | 15,0   | 22590.0206           |
| M 8   | –              | 25             | –              | 18                  | 4,0            | 7,0  | 13         | 14  | –  | 250 | 33,0   | 22590.0208           |
| M10   | –              | 32             | –              | 22                  | 5,0            | 9,0  | 17         | 16  | –  | 250 | 67,0   | 22590.0210           |
| M12   | –              | 40             | –              | 26                  | 6,0            | 11,0 | 19         | 28  | –  | 250 | 113,0  | 22590.0212           |
| M16   | –              | 50             | –              | 32                  | 7,0            | 13,5 | 24         | 36  | –  | 250 | 256,0  | 22590.0216           |
| M20   | –              | 60             | –              | 42                  | 8,0            | 17,0 | 30         | 44  | –  | 250 | 452,0  | 22590.0220           |
| M24   | –              | 60             | –              | 45                  | 9,5            | 19,0 | 36         | 52  | –  | 250 | 504,0  | 22590.0224           |
| <b>patin en thermoplastique, rotule en inox – croquis 1, thermoplastique</b>          |                |                |                |                     |                |      |            |   |  |     |  |                      |
| M 6   | –              | 20             | –              | 14                  | 2,5            | 5,0  | 10         | 4   | -30  | 80  | 6,1  | 22590.0106           |
| M 8   | –              | 25             | –              | 18                  | 4,0            | 7,0  | 13         | 7   | -30  | 80  | 13,0   | 22590.0108           |
| M10   | –              | 32             | –              | 22                  | 5,0            | 9,0  | 17         | 10  | -30  | 80  | 26,0   | 22590.0110           |
| M12   | –              | 40             | –              | 26                  | 6,0            | 11,0 | 19         | 18  | -30  | 80  | 40,0   | 22590.0112           |
| M16   | –              | 50             | –              | 32                  | 7,0            | 13,5 | 24         | 20  | -30  | 80  | 75,0   | 22590.0116           |
| M20   | –              | 60             | –              | 42                  | 8,0            | 17,0 | 30         | 22  | -30  | 80  | 150,0  | 22590.0120           |
| M24   | –              | 60             | –              | 45                  | 9,5            | 19,0 | 36         | 25  | -30  | 80  | 184,0  | 22590.0124           |
| <b>patin et rotule avec axe en acier – croquis 2, acier traité</b>                    |                |                |                |                     |                |      |            |   |  |     |  |                      |
| M 6   | 60             | 20             | 57,0           | 14                  | 2,5            | –    | 10         | 10  | –  | 250 | 29,0   | 22590.0410           |
| M 8   | 80             | 25             | 76,0           | 18                  | 4,0            | –    | 13         | 18  | –  | 250 | 66,0   | 22590.0422           |
| M10   | 100            | 32             | 95,5           | 22                  | 5,0            | –    | 17         | 20  | –  | 250 | 133,0  | 22590.0438           |
| M10   | 150            | 32             | 145,5          | 22                  | 5,0            | –    | 17         | 20  | –  | 250 | 156,0  | 22590.0442           |
| M12   | 100            | 40             | 94,5           | 26                  | 6,0            | –    | 19         | 35  | –  | 250 | 237,0  | 22590.0452           |
| M12   | 150            | 40             | 144,5          | 26                  | 6,0            | –    | 19         | 35  | –  | 250 | 283,0  | 22590.0456           |
| M16   | 100            | 50             | 94,0           | 32                  | 7,0            | –    | 24         | 45  | –  | 250 | 460,0  | 22590.0468           |
| M16   | 200            | 50             | 194,0          | 32                  | 7,0            | –    | 24         | 45  | –  | 250 | 608,0  | 22590.0472           |
| M20   | 100            | 60             | 92,5           | 42                  | 8,0            | –    | 30         | 55  | –  | 250 | 781,0  | 22590.0482           |
| M20   | 200            | 60             | 192,5          | 42                  | 8,0            | –    | 30         | 55  | –  | 250 | 1015,0   | 22590.0488           |
| M24   | 100            | 60             | 91,0           | 45                  | 9,5            | –    | 36         | 65  | –  | 250 | 994,0  | 22590.0495           |
| M24   | 200            | 60             | 191,0          | 45                  | 9,5            | –    | 36         | 65  | –  | 250 | 1320,0   | 22590.0498           |
| <b>patin et rotule avec axe en acier – croquis 2, inox</b>                            |                |                |                |                     |                |      |            |   |  |     |  |                      |
| M 6   | 60             | 20             | 57,0           | 14                  | 2,5            | –    | 10         | 8   | –  | 250 | 29,0   | 22590.0610           |
| M 8   | 80             | 25             | 76,0           | 18                  | 4,0            | –    | 13         | 14  | –  | 250 | 66,0   | 22590.0622           |
| M10   | 100            | 32             | 95,5           | 22                  | 5,0            | –    | 17         | 16  | –  | 250 | 134,0  | 22590.0638           |
| M10   | 150            | 32             | 145,5          | 22                  | 5,0            | –    | 17         | 16  | –  | 250 | 158,0  | 22590.0642           |
| M12   | 100            | 40             | 94,5           | 26                  | 6,0            | –    | 19         | 28  | –  | 250 | 212,0  | 22590.0652           |
| M12   | 150            | 40             | 144,5          | 26                  | 6,0            | –    | 19         | 28  | –  | 250 | 248,0  | 22590.0656           |
| M16   | 100            | 50             | 94,0           | 32                  | 7,0            | –    | 24         | 36  | –  | 250 | 412,0  | 22590.0668           |
| M16   | 200            | 50             | 194,0          | 32                  | 7,0            | –    | 24         | 36  | –  | 250 | 624,0  | 22590.0672           |
| M20   | 100            | 60             | 92,5           | 42                  | 8,0            | –    | 30         | 44  | –  | 250 | 790,0  | 22590.0682           |
| M20   | 200            | 60             | 192,5          | 42                  | 8,0            | –    | 30         | 44  | –  | 250 | 1031,0   | 22590.0688           |
| M24   | 100            | 60             | 91,0           | 45                  | 9,5            | –    | 36         | 52  | –  | 250 | 1001,0   | 22590.0695           |
| M24   | 200            | 60             | 191,0          | 45                  | 9,5            | –    | 36         | 52  | –  | 250 | 1323,0   | 22590.0698           |
| <b>patin en thermoplastique, rotule avec axe en inox – croquis 2, thermoplastique</b> |                |                |                |                     |                |      |            |   |  |     |  |                      |
| M 6   | 60             | 20             | 57,0           | 14                  | 2,5            | –    | 10         | 4   | -30  | 80  | 20,0   | 22590.0510           |
| M 8   | 80             | 25             | 76,0           | 18                  | 4,0            | –    | 13         | 7   | -30  | 80  | 46,0   | 22590.0522           |
| M10   | 100            | 32             | 95,5           | 22                  | 5,0            | –    | 17         | 10  | -30  | 80  | 93,0   | 22590.0538           |
| M10   | 150            | 32             | 145,5          | 22                  | 5,0            | –    | 17         | 10  | -30  | 80  | 117,0  | 22590.0542           |
| M12   | 100            | 40             | 94,5           | 26                  | 6,0            | –    | 19         | 18  | -30  | 80  | 139,0  | 22590.0552           |
| M12   | 150            | 40             | 144,5          | 26                  | 6,0            | –    | 19         | 18  | -30  | 80  | 175,0  | 22590.0556           |
| M16   | 100            | 50             | 94,0           | 32                  | 7,0            | –    | 24         | 20  | -30  | 80  | 300,0  | 22590.0568           |
| M16   | 200            | 50             | 194,0          | 32                  | 7,0            | –    | 24         | 20  | -30  | 80  | 399,0  | 22590.0572           |
| M20   | 100            | 60             | 92,5           | 42                  | 8,0            | –    | 30         | 22  | -30  | 80  | 523,0  | 22590.0582           |
| M20   | 200            | 60             | 192,5          | 42                  | 8,0            | –    | 30         | 22  | -30  | 80  | 759,0  | 22590.0588           |
| M24   | 100            | 60             | 91,0           | 45                  | 9,5            | –    | 36         | 25  | -30  | 80  | 735,0  | 22590.0595           |
| M24   | 200            | 60             | 191,0          | 45                  | 9,5            | –    | 36         | 25  | -30  | 80  | 1041,0   | 22590.0598           |

## Exemple d'application



## Conformité

### Conforme à la directive RoHS

Conforme à la directive 2011/65/CE et à la directive 2015/863.

### Ne contient pas de substances SVHC

Pas de substances SVHC avec une teneur supérieure à 0,1% m/m – Liste SVHC [REACH] au 27.06.2024.

### Ne contient pas de substances de la Proposition 65

Aucune des substances de la Proposition 65 présente.

<https://www.P65Warnings.ca.gov/>

### Ne contient pas de minerais de la guerre

Ce produit ne contient pas de substances classées comme "minerais de la guerre" telles que le tantale, l'étain, l'or ou le wolfram provenant de République démocratique du Congo ou de pays frontaliers.