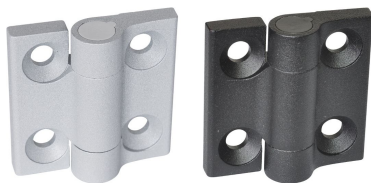


Hinges • Zinc die-cast  
EH 25163.



Product Description

These hinges from zinc die-cast are characterised by their simple and timeless design.

Material

Body

- Zinc die-cast, plastic coated, silver, similar to RAL 9006, matt structure
- Zinc die-cast, plastic coated, black, similar to RAL 9005, matt structure

Covering

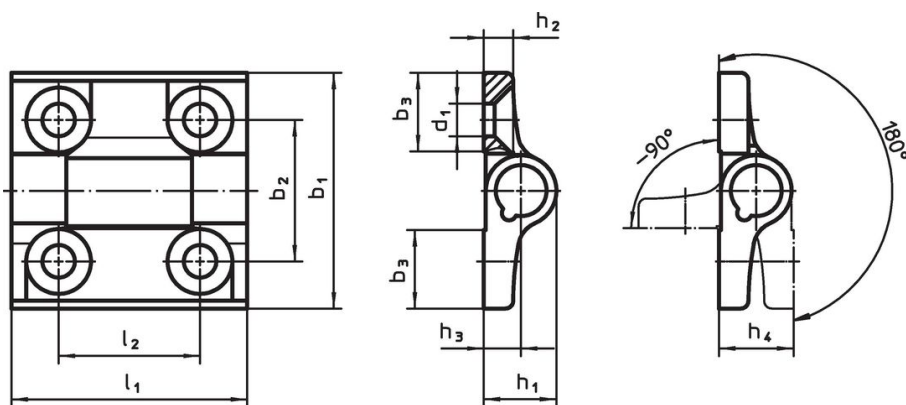
- Thermoplastic POM

More information

Further products

- Spacer Plates, for hinges
- Threaded Plates, for hinges

Drawing



Order information

| Dimensions            |                |                |                |                |                |                |                |                |                |      | max.<br>[°C] | [g]        | Art. No. |  |  |
|-----------------------|----------------|----------------|----------------|----------------|----------------|----------------|----------------|----------------|----------------|------|--------------|------------|----------|--|--|
| b <sub>1</sub>        | l <sub>1</sub> | b <sub>2</sub> | b <sub>3</sub> | d <sub>1</sub> | h <sub>1</sub> | h <sub>2</sub> | h <sub>3</sub> | h <sub>4</sub> | l <sub>2</sub> | [mm] |              |            |          |  |  |
| Zinc die-cast, silver |                |                |                |                |                |                |                |                |                |      |              |            |          |  |  |
| 60                    | 60             | 36             | 20             | 8.3            | 18.5           | 7.5            | 9.5            | 19             | 36             | 80   | 137          | 25163.0005 |          |  |  |
| Zinc die-cast, black  |                |                |                |                |                |                |                |                |                |      |              |            |          |  |  |
| 60                    | 60             | 36             | 20             | 8.3            | 18.5           | 7.5            | 9.5            | 19             | 36             | 80   | 137          | 25163.0105 |          |  |  |

Compliance

For detailed compliance information please select the desired article number.