

Hinges

EH 25160.



Product Description

These hinges are characterised by their compact and stable construction.

Material

Body

- Zinc die-cast, chromed
- Zinc die-cast, plastic coated, silver, similar to RAL 9006, matt structure
- Zinc die-cast, plastic coated, black, similar to RAL 9005, matt structure
- Stainless steel 1.4308
- Stainless steel 1.4408, dull blasted

Axis

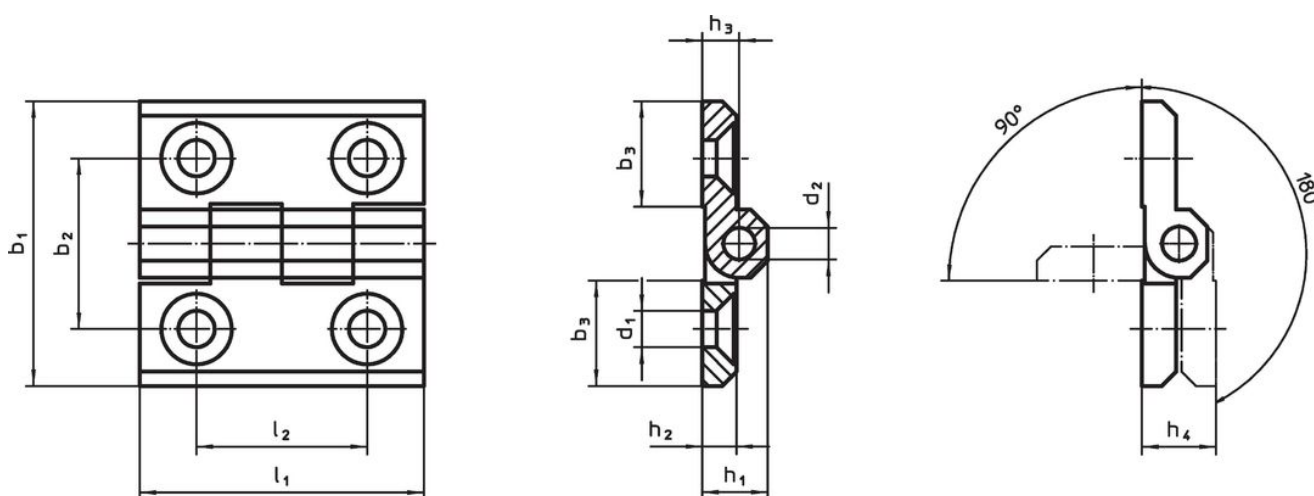
- Stainless steel

More information

Further products


- Spacer Plates, for hinges
- Threaded Plates, for hinges
- Stops, for hinges

Drawing



Order information

Dimensions												[g]	Art. No.
b ₁	b ₂	b ₃	d ₁	d ₂	h ₁	h ₂	h ₃	h ₄ +0.5	l ₁	l ₂			
[mm]													
Zinc die-cast, chromed													
30	18	10.7	4.3	3	7.5	4	4.3	8.6	30	18	19	25160.0005	
40	25	14.0	5.3	4	9.0	5	5.5	11.0	40	25	48	25160.0010	
50	30	18.5	6.4	6	11.5	6	6.5	13.0	50	30	88	25160.0015	
60	36	21.5	8.3	8	15.0	8	8.5	17.0	60	36	165	25160.0020	
Zinc die-cast, silver													
30	18	10.7	4.3	3	7.5	4	4.3	8.6	30	18	19	25160.0105	
40	25	14.0	5.3	4	9.0	5	5.5	11.0	40	25	48	25160.0110	
50	30	18.5	6.4	6	11.5	6	6.5	13.0	50	30	88	25160.0115	
60	36	21.5	8.3	8	15.0	8	8.5	17.0	60	36	165	25160.0120	
Zinc die-cast, black													
30	18	10.7	4.3	3	7.5	4	4.3	8.6	30	18	19	25160.0205	
40	25	14.0	5.3	4	9.0	5	5.5	11.0	40	25	48	25160.0210	
50	30	18.5	6.4	6	11.5	6	6.5	13.0	50	30	88	25160.0215	
60	36	21.5	8.3	8	15.0	8	8.5	17.0	60	36	165	25160.0220	
Stainless steel													
30	18	10.7	4.3	3	7.5	4	4.3	8.6	30	18	19	25160.0305	
40	25	16.0	5.3	4	9.0	5	5.5	11.0	40	25	48	25160.0310	
50	30	21.0	6.4	6	11.5	6	6.5	13.0	50	30	88	25160.0315	
60	36	26.0	8.3	8	15.0	8	8.5	17.0	60	36	165	25160.0320	

Dimensions												Art. No.
b ₁	b ₂	b ₃	d ₁	d ₂	h ₁	h ₂	h ₃	h ₄ +0.5	l ₁	l ₂		
[mm]												
Stainless steel A4												
30	18	10.7	4.3	3	7.5	4	4.3	8.6	30	18	23	25160.1305
40	25	16.0	5.3	4	9.0	5	5.5	11.0	40	25	57	25160.1310
50	30	21.0	6.4	6	11.5	6	6.5	13.0	50	30	110	25160.1315
60	36	26.0	8.3	8	15.0	8	8.5	17.0	60	36	210	25160.1320

Compliance**RoHS compliant**

Compliant according to Directive 2011/65/EU and Directive 2015/863.

Does not contain SVHC substances

No SVHC substances with more than 0.1% w/w contained - SVHC list [REACH] as of 27.06.2024.

Does not contain Proposition 65 substances

No Proposition 65 substances included.

<https://www.P65Warnings.ca.gov/>

Free from Conflict Minerals

This product does not contain any substances designated as "conflict minerals" such as tantalum, tin, gold or tungsten from the Democratic Republic of Congo or adjacent countries.