

Tapered Shaft Hubs · with lock nut, stainless steel

EH 25050.



Product Description

It is a self-centering and non-floating tapered shaft hub in corrosion-protected design with a hexagon nut and a lock nut.

The rotational accuracy of the tapered shaft hubs is 0,03 mm.

By using tapered shaft hubs, all shaft-hub joints of machine elements such as sprocket wheels, gear wheels, belt pulleys, cams, levers etc. can be easily and efficiently established.

Material

External part

- Stainless steel, nickel-plated

Inner part

- Stainless steel, nickel-plated

Nut

- Stainless steel, nickel-plated, hardened

Assembly

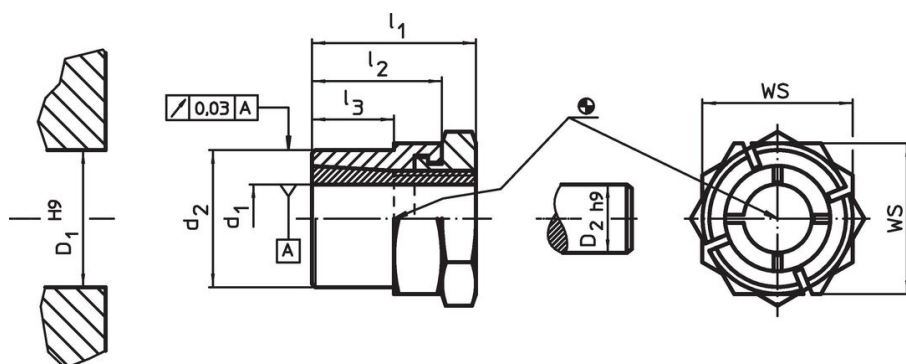
The lock nut at the outer part facilitates locking of the shaft-hub joint if freely rotating shafts are involved. For mounting, a crescent wrench (thickness max. l_2-l_3) is used.

More information

References

Comply with mounting instructions, mounting examples, and technical data.



Drawing



Order information

Dimensions					WS	Tightening torque of the nut T_A max.	Transferable torque M max.	Transferable axial load F_a max.	Surface pressure of shaft P_w max.	Surface pressure of hub P_N max.	Hub bore D_1 H9	Shaft diameter D_2 h9	[g]	Art. No.
d_1	d_2	l_1	l_2	l_3										
6	12	19	15	9	14	7	8.5	2.8	154	119	12	6	14	25050.0306
8	14	22	17	11	16	12	16.4	4.1	125	121	14	8	20	25050.0308
10	18	24	19	12	22	24	34.0	6.8	155	127	18	10	45	25050.0310
12	20	24	19	12	22	31	45.7	7.6	144	128	20	12	43	25050.0312
16	24	28	22	15	27	46	74.2	9.3	109	107	24	16	68	25050.0316
20	30	36	27	17	36	113	173.6	17.4	141	145	30	20	161	25050.0320
25	38	41	30	20	46	175	277.9	22.3	121	122	38	25	305	25050.0325
30	42	44	33	23	50	249	423.5	28.3	113	123	42	30	341	25050.0330

Accessories

	WS [mm]	 [g]	Art. No.
special fork wrench			
	14	45	25050.0814
	16	72	25050.0816
	22	195	25050.0822
	27	195	25050.0827
	36	428	25050.0836
	46	610	25050.0846
	50	870	25050.0850

Compliance

For detailed compliance information please select the desired article number.