

## Flat Knurled Thumb Screws • DIN 653

EH 24770.



### Product Description

All knurled screws are one-piece manufactured with thread up to the head (DIN-designation A).

### Material

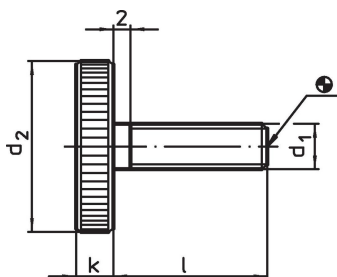
- Steel, blackened, quality 5.8
- Stainless steel 1.4305, dull blasted

### More information

### Notes


Knurling pitch and knurling depth may differ from DIN.

### Drawing



### Order information

d <sub>1</sub>	Dimensions			k	[g]	Art. No.
	l	d <sub>2</sub>	[mm]			
<b>Steel</b>						
M 3	6	12		2.5	2.3	<a href="#">24770.0072</a>
M 3	8	12		2.5	2.4	<a href="#">24770.0073</a>
M 3	10	12		2.5	2.5	<a href="#">24770.0074</a>
M 3	16	12		2.5	2.7	<a href="#">24770.0077</a>
M 3	20	12		2.5	2.9	<a href="#">24770.0079</a>
M 4	8	16		3.5	5.6	<a href="#">24770.0092</a>
M 4	10	16		3.5	5.7	<a href="#">24770.0093</a>
M 4	12	16		3.5	6.1	<a href="#">24770.0094</a>
M 4	16	16		3.5	6.2	<a href="#">24770.0096</a>
M 4	20	16		3.5	6.6	<a href="#">24770.0098</a>
M 4	25	16		3.5	7.1	<a href="#">24770.0100</a>
M 5	10	20		4.0	10.0	<a href="#">24770.0112</a>
M 5	12	20		4.0	11.0	<a href="#">24770.0113</a>
M 5	16	20		4.0	12.0	<a href="#">24770.0115</a>
M 5	20	20		4.0	12.0	<a href="#">24770.0117</a>
M 5	25	20		4.0	12.0	<a href="#">24770.0119</a>
M 5	30	20		4.0	13.0	<a href="#">24770.0121</a>
M 6	12	24		5.0	18.0	<a href="#">24770.0132</a>
M 6	16	24		5.0	20.0	<a href="#">24770.0134</a>
M 6	20	24		5.0	21.0	<a href="#">24770.0136</a>
M 6	25	24		5.0	21.0	<a href="#">24770.0138</a>
M 6	30	24		5.0	22.0	<a href="#">24770.0140</a>
M 6	40	24		5.0	23.0	<a href="#">24770.0142</a>
M 8	16	30		6.0	36.0	<a href="#">24770.0152</a>
M 8	20	30		6.0	37.0	<a href="#">24770.0154</a>
M 8	25	30		6.0	39.0	<a href="#">24770.0156</a>
M 8	30	30		6.0	40.0	<a href="#">24770.0158</a>
M 8	35	30		6.0	42.0	<a href="#">24770.0160</a>
M 8	40	30		6.0	44.0	<a href="#">24770.0161</a>
M10	20	36		8.0	71.0	<a href="#">24770.0172</a>

d <sub>1</sub>	Dimensions			k	 [g]	Art. No.
	l	[mm]				
M10	25		36	8.0	72.0	<a href="#">24770.0174</a>
M10	30		36	8.0	76.0	<a href="#">24770.0176</a>
M10	35		36	8.0	78.0	<a href="#">24770.0178</a>
M10	40		36	8.0	80.0	<a href="#">24770.0180</a>
<b>Stainless steel</b>						
M 4	8		16	3.5	5.6	<a href="#">24770.0292</a>
M 4	10		16	3.5	5.7	<a href="#">24770.0293</a>
M 4	12		16	3.5	6.1	<a href="#">24770.0294</a>
M 4	16		16	3.5	6.2	<a href="#">24770.0296</a>
M 5	10		20	4.0	10.0	<a href="#">24770.0312</a>
M 5	12		20	4.0	11.0	<a href="#">24770.0313</a>
M 5	16		20	4.0	12.0	<a href="#">24770.0315</a>
M 5	20		20	4.0	12.0	<a href="#">24770.0317</a>
M 6	12		24	5.0	18.0	<a href="#">24770.0332</a>
M 6	16		24	5.0	20.0	<a href="#">24770.0334</a>
M 6	20		24	5.0	21.0	<a href="#">24770.0336</a>
M 6	25		24	5.0	21.0	<a href="#">24770.0338</a>
M 8	16		30	6.0	36.0	<a href="#">24770.0352</a>
M 8	20		30	6.0	37.0	<a href="#">24770.0354</a>
M 8	25		30	6.0	39.0	<a href="#">24770.0356</a>
M 8	30		30	6.0	40.0	<a href="#">24770.0358</a>
M10	20		36	8.0	71.0	<a href="#">24770.0372</a>
M10	25		36	8.0	72.0	<a href="#">24770.0374</a>
M10	30		36	8.0	76.0	<a href="#">24770.0376</a>
M10	40		36	8.0	80.0	<a href="#">24770.0380</a>

## Compliance

For detailed compliance information please select the desired article number.