

## Ball Knobs • metal types similar to DIN 319

EH 24561.



### Product Description

#### Material

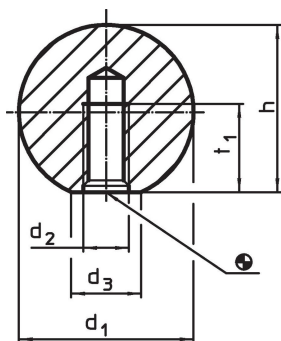
- Steel, polished, bright
- Stainless steel 1.4305, dull blasted
- Aluminium, polished

#### More information

#### Notes

Supplement DIN 319 Form C about metallic versions.

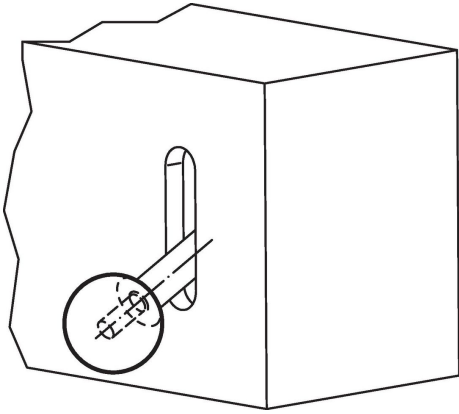
### Drawing



### Order information

d <sub>1</sub>	d <sub>2</sub>	Dimensions		t <sub>1</sub> min.	[g]	Art. No.
		d <sub>3</sub> ~ [mm]	h ~			
<b>Steel</b>						
16	M 4	8	15.0	7.0	16	<a href="#">24561.0016</a>
20	M 5	12	18.0	9.0	26	<a href="#">24561.0020</a>
25	M 6	15	22.5	11.0	58	<a href="#">24561.0025</a>
32	M 8	18	29.0	14.5	116	<a href="#">24561.0032</a>
40	M10	22	37.0	18.0	241	<a href="#">24561.0040</a>
50	M12	27	46.0	21.0	475	<a href="#">24561.0050</a>
<b>Stainless steel</b>						
16	M 4	8	15.0	7.0	16	<a href="#">24561.0216</a>
20	M 5	12	18.0	9.0	26	<a href="#">24561.0220</a>
25	M 6	15	22.5	11.0	58	<a href="#">24561.0225</a>
32	M 8	18	29.0	14.5	116	<a href="#">24561.0232</a>
40	M10	22	37.0	18.0	241	<a href="#">24561.0240</a>
<b>Aluminium Al</b>						
16	M 4	8	15.0	7.0	16	<a href="#">24561.0116</a>
20	M 5	12	18.0	9.0	26	<a href="#">24561.0120</a>
25	M 6	15	22.5	11.0	58	<a href="#">24561.0125</a>
32	M 8	18	29.0	14.5	116	<a href="#">24561.0132</a>
40	M10	22	37.0	18.0	241	<a href="#">24561.0140</a>
50	M12	27	46.0	21.0	475	<a href="#">24561.0150</a>

### Application example



### Compliance

For detailed compliance information please select the desired article number.