

## Machine Handles • DIN 39

EH 24450.

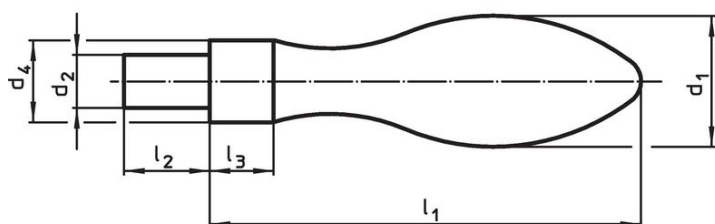


### Product Description

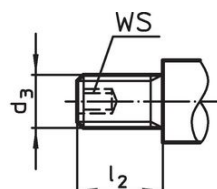
#### Material

- Steel, turned, zinc-plated by galvanization, passivated
- Stainless steel 1.4404

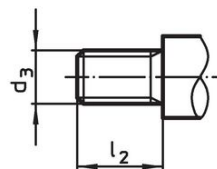
### Drawing



picture 1



picture 2

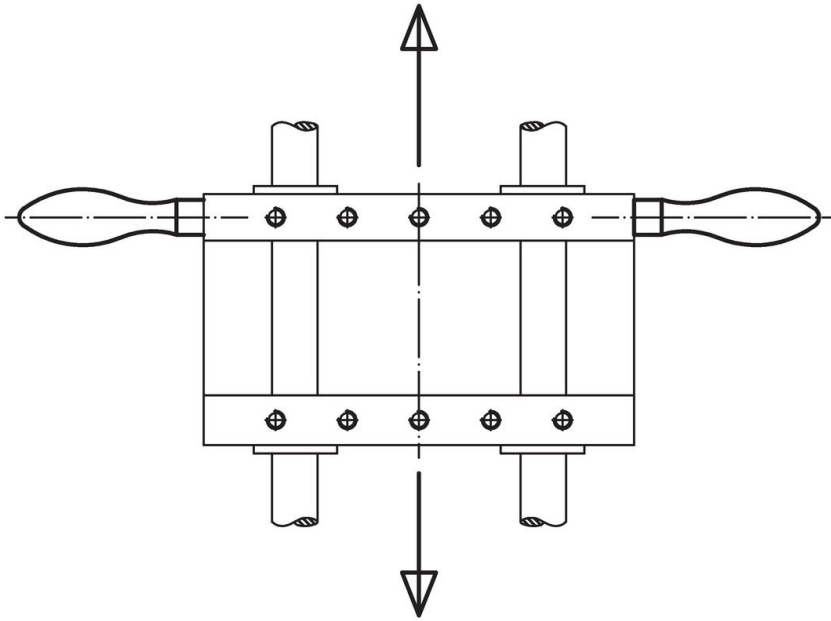


picture 3

### Order information

d <sub>1</sub>	d <sub>2</sub> h8	d <sub>3</sub>	Dimensions			WS	[g]	Art. No.
			d <sub>4</sub> h13 [mm]	l <sub>1</sub> ~	l <sub>2</sub>			
<b>with smooth lug, form D – picture 1, Steel</b>								
16	7	–	10	50	11	7	–	24450.0016
20	8	–	13	64	13	8	–	24450.0020
25	10	–	16	80	14	10	–	24450.0025
32	13	–	20	100	21	13	–	24450.0032
36	16	–	22	112	26	14	–	24450.0036
<b>with male thread lug, form E – picture 2, Steel</b>								
16	–	M 6	10	50	11	7	3	24450.0116
20	–	M 8	13	64	13	8	4	24450.0120
25	–	M10	16	80	14	10	5	24450.0125
32	–	M12	20	100	21	13	6	24450.0132
36	–	M16	22	112	26	14	8	24450.0136
<b>with male thread lug, form E – picture 3, Stainless steel</b>								
16	–	M 6	10	50	11	7	–	24450.0316
20	–	M 8	13	64	13	8	–	24450.0320
25	–	M10	16	80	14	10	–	24450.0325

Application example



Compliance

For detailed compliance information please select the desired article number.