

## Tubular Handles

EH 24321.



### Product Description

Tubular handles are used, for example, on machine doors. These tubular handles made of aluminium are characterised by their ergonomic and robust construction and modern design. This version is equipped with angled handle legs (legs).

#### Material

##### Handle

- Aluminium, anodised
- Aluminium, plastic coated, similar to RAL 9005 black, matt structure

##### Handle shank

- Zinc die-cast, plastic coated, silver, similar to RAL 9006, matt structure
- Zinc die-cast, plastic coated, black, similar to RAL 9005, matt structure

##### Cap

- Plastic, light grey

#### Assembly

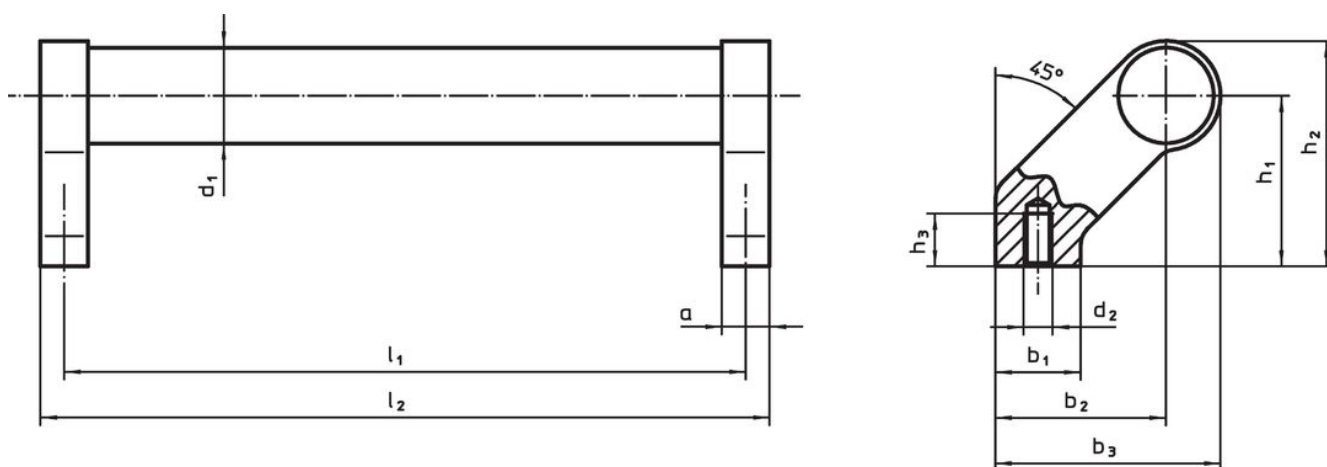
Back mount handle.

#### More information

#### Notes


Special types on request.

### Drawing



### Order information

d <sub>1</sub>	l <sub>1</sub> ±0.25	a	b <sub>1</sub>	b <sub>2</sub>	Dimensions					h <sub>3</sub> min.	l <sub>2</sub>	[g]	Art. No.	
					b <sub>3</sub>	d <sub>2</sub>	h <sub>1</sub>	h <sub>2</sub>	[mm]					
silver														
20	180	12	24	42	54	M6	42	54	12	192	244	24321.0005		
20	200	12	24	42	54	M6	42	54	12	212	244	24321.0010		
20	250	12	24	42	54	M6	42	54	12	262	265	24321.0015		
20	300	12	24	42	54	M6	42	54	12	312	280	24321.0020		
20	350	12	24	42	54	M6	42	54	12	362	296	24321.0025		
20	400	12	24	42	54	M6	42	54	12	412	317	24321.0030		
28	200	14	25	50	66	M8	50	66	15	214	424	24321.0035		
28	250	14	25	50	66	M8	50	66	15	264	455	24321.0040		
28	300	14	25	50	66	M8	50	66	15	314	480	24321.0045		
28	350	14	25	50	66	M8	50	66	15	364	501	24321.0050		
28	400	14	25	50	66	M8	50	66	15	414	536	24321.0055		
28	500	14	25	50	66	M8	50	66	15	514	593	24321.0060		
28	600	14	25	50	66	M8	50	66	15	614	570	24321.0065		
30	200	17	27	51	68	M8	51	68	15	217	429	24321.0070		
30	300	17	27	51	68	M8	51	68	15	317	489	24321.0075		

d <sub>1</sub>	l <sub>1</sub> ±0.25	a	b <sub>1</sub>	Dimensions							h <sub>3</sub> min.	l <sub>2</sub>	 [g]	Art. No.
				b <sub>2</sub>	b <sub>3</sub>	d <sub>2</sub>	h <sub>1</sub>	h <sub>2</sub>	[mm]					
30	350	17	27	51	68	M8	51	68	15	367	501	24321.0080		
30	400	17	27	51	68	M8	51	68	15	417	538	24321.0085		
30	500	17	27	51	68	M8	51	68	15	517	613	24321.0090		
30	600	17	27	51	68	M8	51	68	15	617	669	24321.0095		
<b>black</b>														
20	180	12	24	42	54	M6	42	54	12	192	244	24321.0505		
20	200	12	24	42	54	M6	42	54	12	212	244	24321.0510		
20	250	12	24	42	54	M6	42	54	12	262	265	24321.0515		
20	300	12	24	42	54	M6	42	54	12	312	280	24321.0520		
20	350	12	24	42	54	M6	42	54	12	362	296	24321.0525		
20	400	12	24	42	54	M6	42	54	12	412	317	24321.0530		
28	200	14	25	50	66	M8	50	66	15	214	424	24321.0535		
28	250	14	25	50	66	M8	50	66	15	264	455	24321.0540		
28	300	14	25	50	66	M8	50	66	15	314	480	24321.0545		
28	350	14	25	50	66	M8	50	66	15	364	501	24321.0550		
28	400	14	25	50	66	M8	50	66	15	414	536	24321.0555		
28	500	14	25	50	66	M8	50	66	15	514	593	24321.0560		
28	600	14	25	50	66	M8	50	66	15	614	570	24321.0565		
30	200	17	27	51	68	M8	51	68	15	217	429	24321.0570		
30	300	17	27	51	68	M8	51	68	15	317	489	24321.0575		
30	350	17	27	51	68	M8	51	68	15	367	501	24321.0580		
30	400	17	27	51	68	M8	51	68	15	417	538	24321.0585		
30	500	17	27	51	68	M8	51	68	15	517	613	24321.0590		
30	600	17	27	51	68	M8	51	68	15	617	669	24321.0595		

## Compliance

### RoHS compliant

Contains lead - compliant according to exceptions 6a / 6b / 6c.

### Contains SVHC substances >0,1% w/w

Contains lead - SVHC list [REACH] as of 27.06.2024.

### Contains Proposition 65 substances



Lead can cause cancer and reproductive harm from exposure  
<https://www.P65Warnings.ca.gov/>

### Free from Conflict Minerals

This product does not contain any substances designated as "conflict minerals" such as tantalum, tin, gold or tungsten from the Democratic Republic of Congo or adjacent countries.