

## Anti-Turn Locking Devices for Taper Clamping Units · for clamping bars

EH 23250.



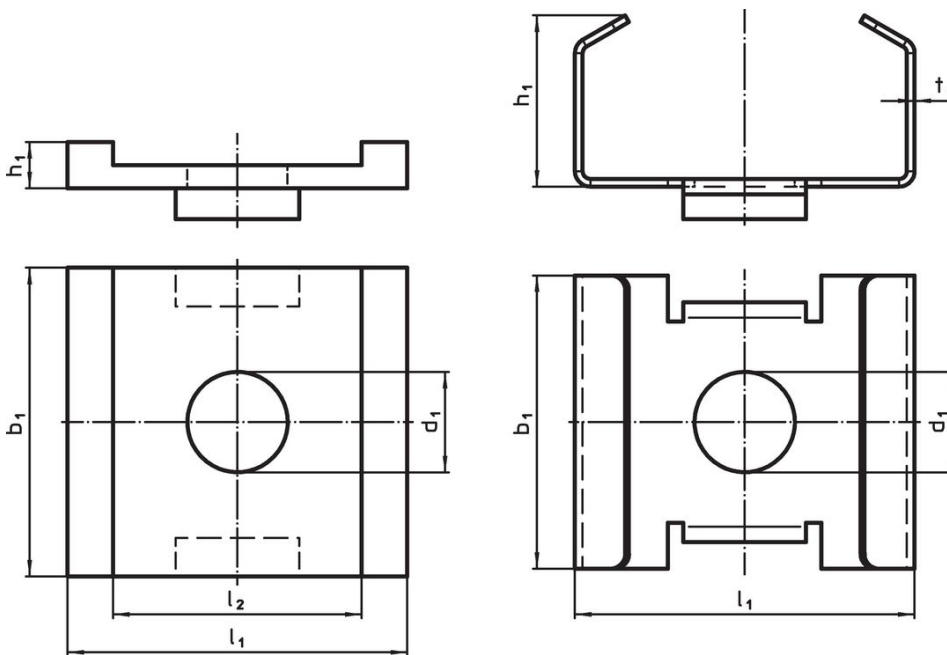
### Product Description

Both versions prevent turning of the taper clamping unit on the clamping bar. The version "picture 2" additionally protects against damage from scales of wood and dirt.

### Material

- Steel

### Drawing



picture 1

picture 2

### Order information

d <sub>1</sub>	b <sub>1</sub>	h <sub>1</sub>	Dimensions			t <sub>1</sub>	[g]	Art. No.
			l <sub>1</sub>	l <sub>2</sub>	[mm]			
<b>picture 1</b>								
13	40	3	44	32.2	-	55	<a href="#">23250.0532</a>	
<b>picture 2</b>								
13	38	23	44	-	1	26	<a href="#">23250.0535</a>	

## Compliance

### RoHS compliant

Compliant according to Directive 2011/65/EU and Directive 2015/863.

### Does not contain SVHC substances

No SVHC substances with more than 0.1% w/w contained - SVHC list [REACH] as of 23.01.2024.

### Does not contain Proposition 65 substances

No Proposition 65 substances included.

<https://www.P65Warnings.ca.gov/>

### Free from Conflict Minerals

This product does not contain any substances designated as "conflict minerals" such as tantalum, tin, gold or tungsten from the Democratic Republic of Congo or adjacent countries.