

Loose Slot Tenons · DIN 6323

EH 23120.



Product Description

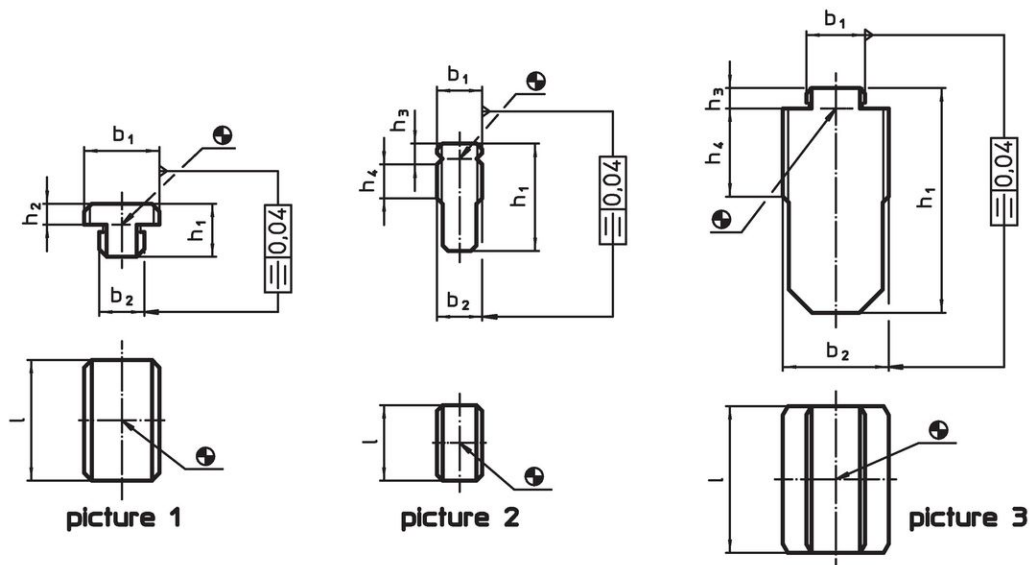
To be used for locating fixtures and clamping elements onto machine tables with T-slots to DIN 650.

Being simply pushed into position after fixture or clamping element has been roughly positioned, they cannot cause damage to the machine as could protruding fixed slot tenons or low slot tenons.

Material

- Steel, case-hardened, blackened, ground

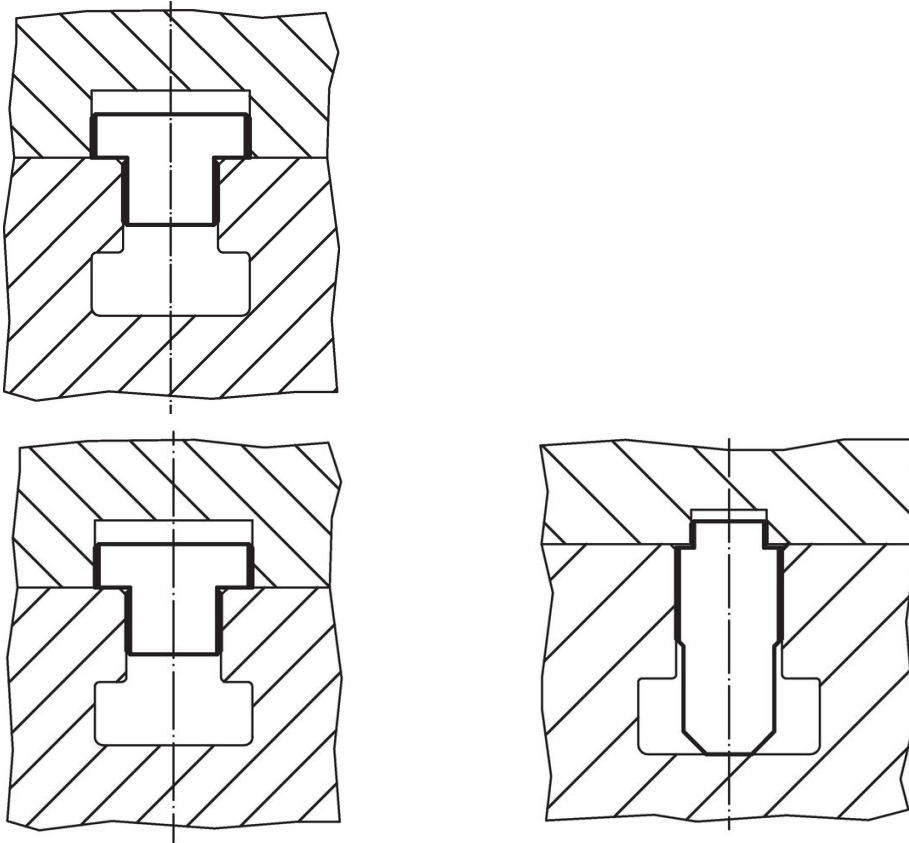
Drawing



Order information

T-slot size fixture b_1 h6 [mm]	T-slot size machine b_2 h6 [mm]	Dimensions					[g]	Art. No.
		h_1	h_2	h_3	h_4	l		
form A, $b_1 > b_2$ – picture 1								
12	10	12.0	3.6	–	–	20	20	23120.0010
20	12	14.0	5.5	–	–	32	52	23120.0012
20	14	14.0	5.5	–	–	32	56	23120.0014
20	16	14.0	5.5	–	–	32	61	23120.0016
20	18	14.0	5.5	–	–	32	65	23120.0018
form B, $b_1 = b_2$ – picture 2								
12	12	28.6	–	5.5	9	20	45	23120.0011
20	20	45.5	–	7.0	16	32	199	23120.0020
form C, $b_1 < b_2$ – picture 3								
20	22	50.5	–	7.0	18	40	305	23120.0022
20	28	61.5	–	7.0	24	40	472	23120.0028
20	36	76.5	–	7.0	30	50	952	23120.0036

Application example



Compliance

RoHS compliant

Compliant according to Directive 2011/65/EU and Directive 2015/863.

Does not contain SVHC substances

No SVHC substances with more than 0.1% w/w contained - SVHC list [REACH] as of 23.01.2024.

Does not contain Proposition 65 substances

No Proposition 65 substances included.

<https://www.P65Warnings.ca.gov/>

Free from Conflict Minerals

This product does not contain any substances designated as "conflict minerals" such as tantalum, tin, gold or tungsten from the Democratic Republic of Congo or adjacent countries.