

Positioning Sensors · pneumatical

EH 22800.



Product Description

Used in jigs and fixtures as positioning control for pre-machined workpieces. Sensitivity accuracy is 0.015-0.075 mm, depending on the workpiece surface. Contact control is achieved through compressed air backwash and is indicated on the monitoring unit.

Material

Seating Pins

- Tool steel, hardened, ground

Seal

- PVC

Screw

- Steel, zinc-plated by galvanization, quality 4.8 (ISO 1207)

Plug-in nipple

- Brass

More information

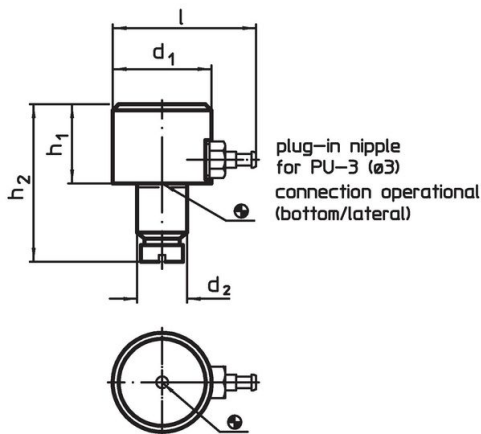
Notes

Further information on request.

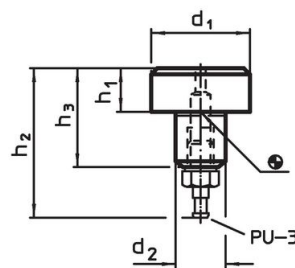
Further products

- Monitoring Units, for positioning sensors, pneumatic

Drawing



picture 1

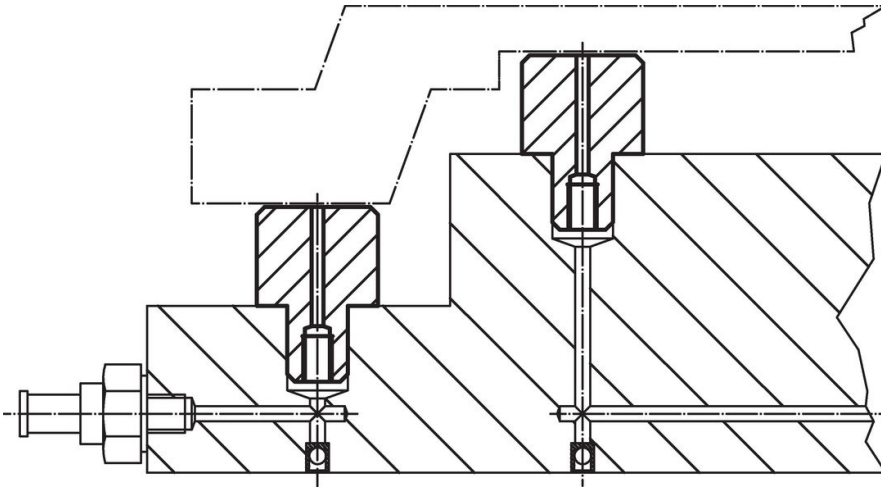


picture 2

Order information

d ₁	h ₁ h ₉	d ₂ n6	Dimensions			[g]	Art. No.
			h ₂	h ₃	l		
[mm]							
bottom/lateral connection – picture 1							
16	13	8	27.0	–	28.0	24	22800.0010
25	20	12	39.0	–	36.5	93	22800.0020
bottom connection – picture 2							
16	5	8	28.5	15	–	12	22800.0100

Application example



Compliance

For detailed compliance information please select the desired article number.