

## Pins · with plastic bearing surface

EH 22691.



### Product Description

Pins with plastic bearing surface can be used as protective supports, stops, and thrust pads. This protects high-quality surfaces from damage.

### Material

#### Insert

- Plastic (PEEK), blue

#### Threaded bushing

- Stainless steel

#### Grub Screw

- Stainless steel

#### Body

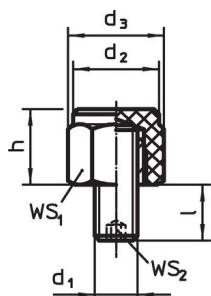
- Plastic (PEEK), blue
- Stainless steel 1.4305

### More information

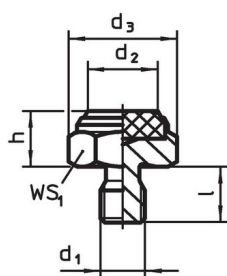
#### Further products

- Seating Elements, with plastic bearing surface, orienting
- Pins

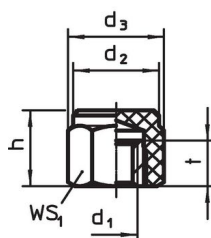
### Drawing



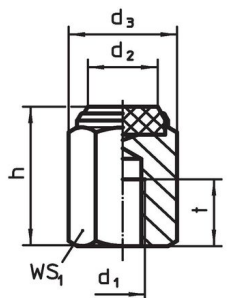
picture 1



picture 2



picture 3





picture 4

### Order information

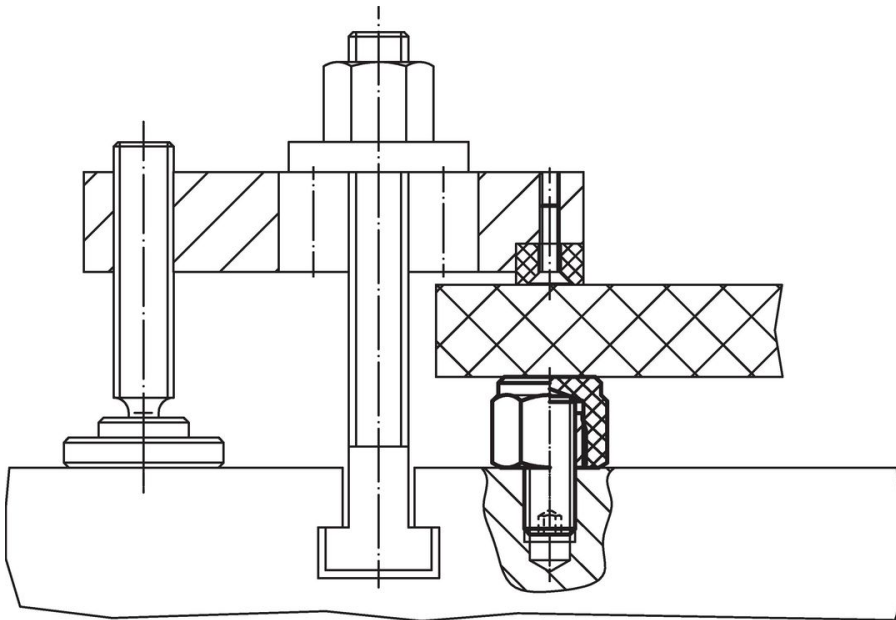
h ±0.1	Dimensions					WS <sub>1</sub> [mm]	WS <sub>2</sub> [mm]	Load capacity for static load max. [kN]	Tightening torque max. [Nm]	Temperature		Weight [g]	Art. No.
	d <sub>1</sub>	d <sub>2</sub>	d <sub>3</sub>	l	t					min.	max.		
[mm]													
with male thread, body made of plastic (PEEK), bearing surface plain – picture 1													
15	M 8	17.0	19.0	8 ±1	–	17	4	8.5	10	-60	250	12.0	22691.0122
20	M10	19.0	21.5	10 ±1	–	19	5	9.5	10	-60	250	21.0	22691.0133
20	M12	22.0	25.0	14 ±1	–	22	6	14.0	10	-60	250	32.0	22691.0143

<sup>1)</sup> The tightening torque of bolts with female thread is for threaded pins, quality 8. The bolt has to be tightened over the total thread length.

h ±0.1	d <sub>1</sub>	Dimensions				l	t	WS <sub>1</sub> [mm]	WS <sub>2</sub> [mm]	Load capacity for static load max. [kN]	Tightening torque max. [Nm]	 min. max. [°C]		 [g]	Art. No.	
		d <sub>2</sub>	d <sub>3</sub>	[mm]												
<b>with male thread, plastic insert, bearing surface plain – picture 2</b>																
10	M 8	12.5	19.4	10	–	17	–	11.5	18	-60	250	14.0	22691.0021			
10	M10	14.5	21.9	12	–	19	–	15.5	32	-60	250	20.0	22691.0031			
15	M10	14.5	21.9	12	–	19	–	15.5	32	-60	250	32.0	22691.0032			
10	M12	17.5	25.2	14	–	22	–	22.5	60	-60	250	28.0	22691.0041			
15	M12	17.5	25.2	14	–	22	–	22.5	60	-60	250	45.0	22691.0042			
<b>with female thread, body made of plastic (PEEK), bearing surface plain – picture 3</b>																
15	M 8	17.0	19.0	–	9	17	–	8.5	10	-60	250	6.4	22691.0222			
20	M10	19.0	21.5	–	10	19	–	9.5	10	-60	250	21.0	22691.0233			
20	M12	22.0	25.0	–	12	22	–	14.0	10	-60	250	13.0	22691.0243			
<b>with female thread, plastic insert (PEEK), bearing surface plain – picture 4</b>																
25	M 8	12.5	19.4	–	12	17	–	11.5	18 <sup>1)</sup>	-60	250	35.0	22691.0324			
30	M10	14.5	21.9	–	15	19	–	15.5	32 <sup>1)</sup>	-60	250	53.0	22691.0335			
30	M12	17.5	25.2	–	18	22	–	22.5	60 <sup>1)</sup>	-60	250	68.0	22691.0345			

<sup>1)</sup> The tightening torque of bolts with female thread is for threaded pins, quality 8. The bolt has to be tightened over the total thread length.

### Application example



### Compliance

#### RoHS compliant

Compliant according to Directive 2011/65/EU and Directive 2015/863.

#### Does not contain SVHC substances

No SVHC substances with more than 0.1% w/w contained - SVHC list [REACH] as of 23.01.2024.

#### Does not contain Proposition 65 substances

No Proposition 65 substances included.

<https://www.P65Warnings.ca.gov/>

#### Free from Conflict Minerals

This product does not contain any substances designated as "conflict minerals" such as tantalum, tin, gold or tungsten from the Democratic Republic of Congo or adjacent countries.