

## Seating Pins · partially DIN 6321 (old norm)

EH 22630.



### Product Description

To be used as feet and stops.  
The bearing surface has no centre.

### Material

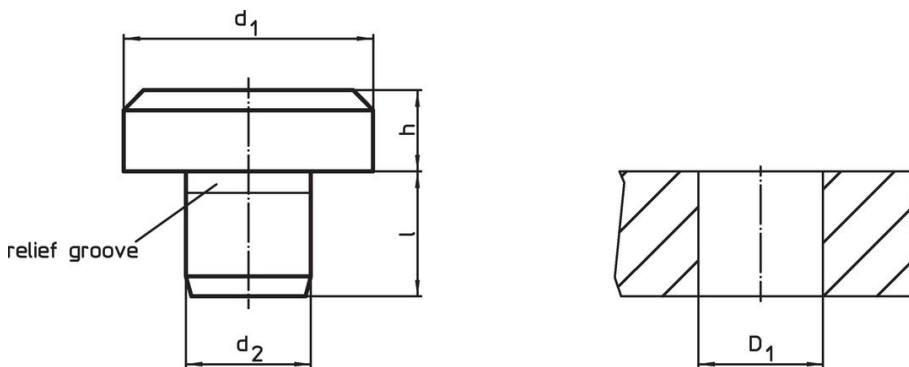
- Tool steel, hardened, ground

### More information

### Further products

- Seating Pins, DIN 6321

### Drawing

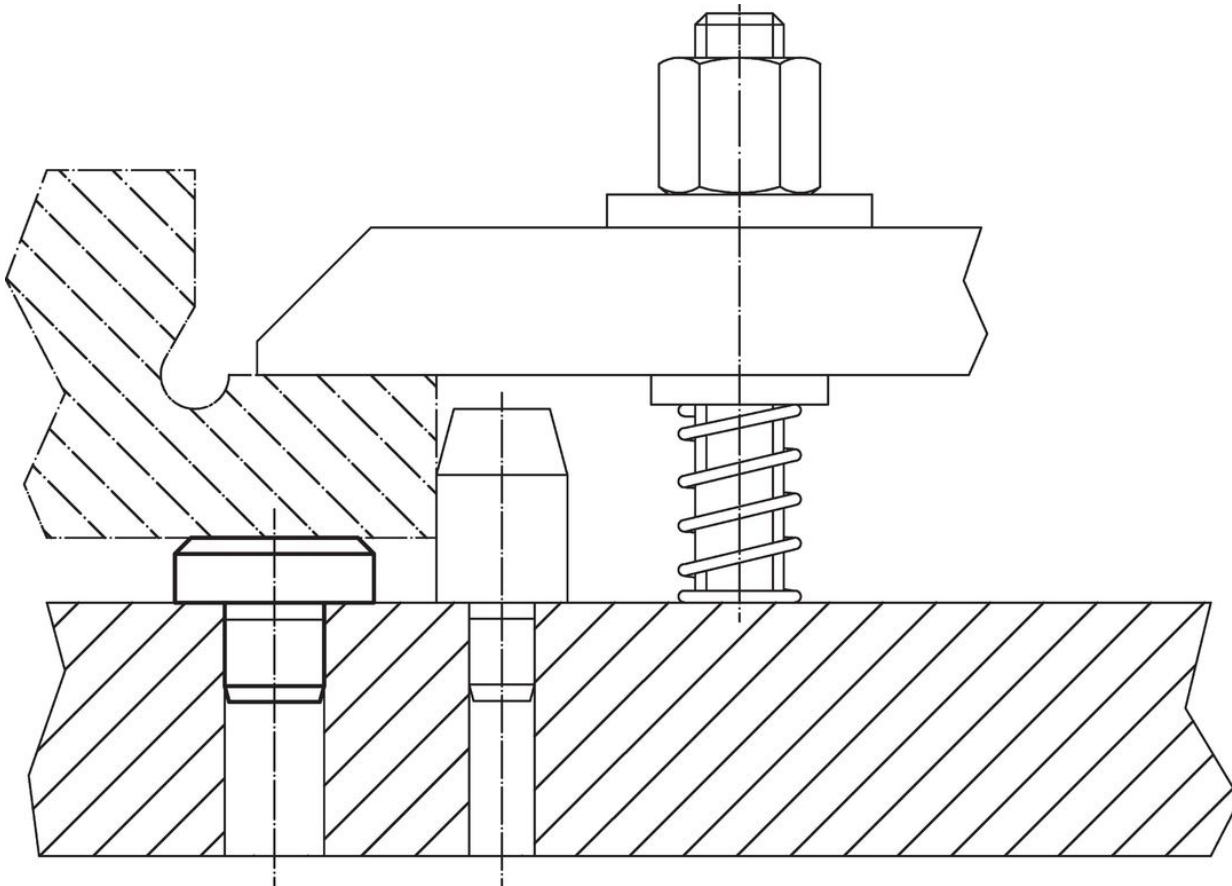


### Order information

d <sub>1</sub>	Dimensions			l	Location hole D <sub>1</sub> H7 [mm]	[g]	Art. No.
	h h9	d <sub>2</sub> n6	[mm]				
<b>DIN 6321 old norm</b>							
6	5.0	4	6.0	4	1.8	22630.0001	
10	8.0	6	8.0	6	6.2	22630.0002	
16	5.0	8	10.0	8	11.0	22630.0003	
16	13.0	8	10.0	8	24.0	22630.0004	
25	8.0	12	14.0	12	41.0	22630.0005	
25	20.0	12	14.0	12	88.0	22630.0006	
40	13.0	20	20.0	20	171.0	22630.0007	
40	32.0	20	20.0	20	358.0	22630.0008	
<b>intermediate sizes</b>							
6	2.5	4	6.5	4	1.2	22630.0110	
6	4.5	4	8.5	4	1.9	22630.0112	
8	4.0	5	8.0	5	3.1	22630.0116	
8	7.0	5	8.0	5	4.2	22630.0118	
10	4.5	6	8.5	6	4.4	22630.0120	
12	6.0	6	10.0	6	7.6	22630.0124	
12	10.0	6	10.0	6	11.0	22630.0126	
20	6.0	10	12.0	10	21.0	22630.0130	
20	12.0	10	12.0	10	36.0	22630.0132	
25	30.0	12	14.0	12	124.0	22630.0135	

d <sub>1</sub>	Dimensions			l	Location hole D <sub>1</sub> H7 [mm]	[g]	Art. No.
	h h9 [mm]	d <sub>2</sub> n6					
30	25.0	16		20.0	16	164.0	<a href="#">22630.0137</a>
30	40.0	16		20.0	16	248.0	<a href="#">22630.0140</a>
30	50.0	16		20.0	16	305.0	<a href="#">22630.0144</a>
30	65.0	16		20.0	16	385.0	<a href="#">22630.0148</a>
30	80.0	20		20.0	20	485.0	<a href="#">22630.0152</a>
30	100.0	20		20.0	20	594.0	<a href="#">22630.0156</a>

### Application example



### Compliance

#### RoHS compliant

Compliant according to Directive 2011/65/EU and Directive 2015/863.

#### Does not contain SVHC substances

No SVHC substances with more than 0.1% w/w contained - SVHC list [REACH] as of 23.01.2024.

#### Does not contain Proposition 65 substances

No Proposition 65 substances included.

<https://www.P65Warnings.ca.gov/>

#### Free from Conflict Minerals

This product does not contain any substances designated as "conflict minerals" such as tantalum, tin, gold or tungsten from the Democratic Republic of Congo or adjacent countries.