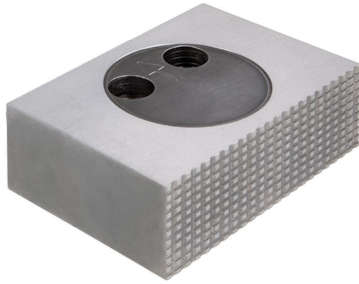


## Pivot Jaws · movable EH 1701.



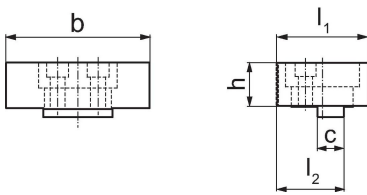
### Product Description

- One side smooth and ground, the other side ribbed
- 360° swivel
- Use together with hardened base jaws (Art. No. 1701.120)
- Suitable for mounting of swap-on parallels (Art. No. 1701.190 - 1701.200)

### Material

- Steel, hardened

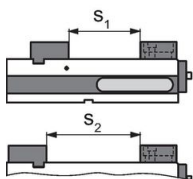
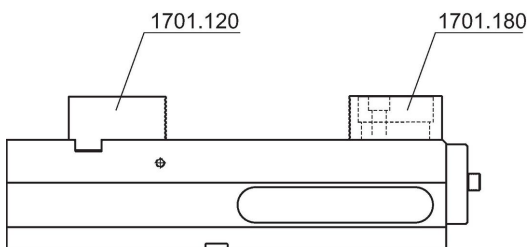
### Drawing



### Order information

Jaw width [mm]	Dimensions					[kg]	Art. No.
	b	l <sub>1</sub>	l <sub>2</sub> [mm]	h	c		
Jaw, movable							
125	124.4	84	62	39.5	24	3	1701.180

### Application example



	MS 125-S	MS 125-M	MS 125-L
Clamping width s <sub>1</sub>	0 - 45	0 - 161	0 - 296
Clamping width s <sub>2</sub>	0 - 99	38 - 213	0 - 349

## Compliance

### RoHS compliant

Compliant according to Directive 2011/65/EU and Directive 2015/863.

### Does not contain SVHC substances

No SVHC substances with more than 0.1% w/w contained - SVHC list [REACH] as of 27.06.2024.

### Does not contain Proposition 65 substances

No Proposition 65 substances included.

<https://www.P65Warnings.ca.gov/>

### Free from Conflict Minerals

This product does not contain any substances designated as "conflict minerals" such as tantalum, tin, gold or tungsten from the Democratic Republic of Congo or adjacent countries.