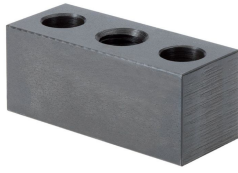


Clamping Bars

EH 1533.000 - EH 1633.200

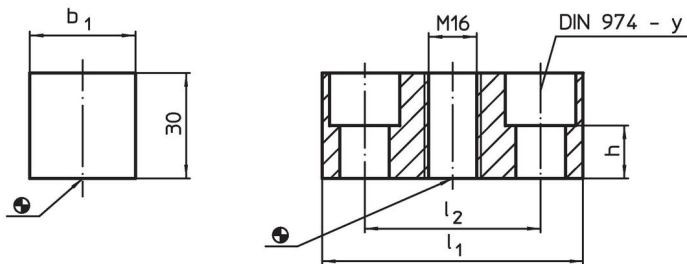


Product Description

Material

- Steel, blackened

Drawing



Order information

System	Dimensions				y	For screws	📦 [g]	Art. No.
	l ₁	b ₁	l ₂	h				
L12	74	30	50.0	15	12	M12	364	1533.000
L12	95	30	70.3	15	12	M12	510	1533.200
L16	85	35	50.0	14	16	M16	467	1633.000
L16	105	35	70.3	14	16	M16	629	1633.200

Compliance

RoHS compliant

Compliant according to Directive 2011/65/EU and Directive 2015/863.

Does not contain SVHC substances

No SVHC substances with more than 0.1% w/w contained - SVHC list [REACH] as of 23.01.2024.

Does not contain Proposition 65 substances

No Proposition 65 substances included.
<https://www.P65Warnings.ca.gov/>

Free from Conflict Minerals

This product does not contain any substances designated as "conflict minerals" such as tantalum, tin, gold or tungsten from the Democratic Republic of Congo or adjacent countries.