

Clamping Bars

EH 1013.600 - EH 1113.800

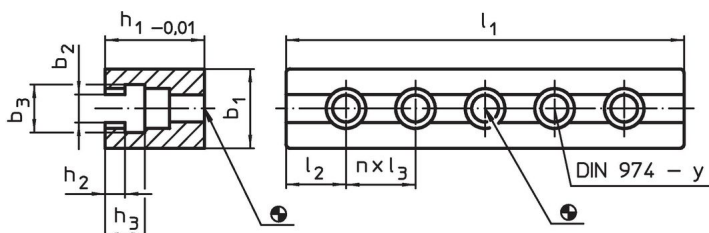


Product Description


Material

- Steel, case-hardened, ground

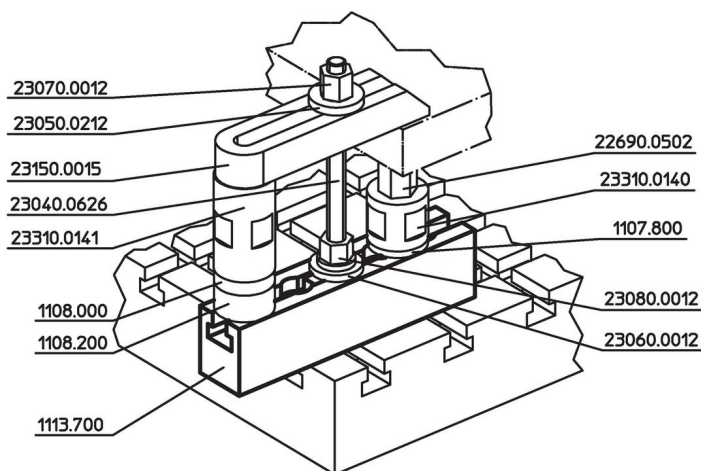
Drawing



Order information

System	Dimensions									Amount n	For screws [mm]	y [mm]	 [g]	Art. No.
	l ₁	b ₁	b ₂	b ₃	h ₁	h ₂	h ₃	l ₂	l ₃					
V40	80	24	10.3	18	30	6.5	14.5	20.0	40	1	M 8	8	288	1013.600
V40	120	24	10.3	18	30	6.5	14.5	20.0	40	2	M 8	8	443	1013.700
V40	160	24	10.3	18	30	6.5	14.5	20.0	40	3	M 8	8	577	1013.800
V70	140	40	14.3	24	50	10.0	20.0	35.0	35	2	M12	12	1604	1113.600
V70	200	40	14.3	24	50	10.0	20.0	30.0	35	4	M12	12	2230	1113.700
V70	300	40	14.3	24	50	10.0	20.0	27.5	35	7	M12	12	3320	1113.800

Application example



Compliance

RoHS compliant

Compliant according to Directive 2011/65/EU and Directive 2015/863.

Does not contain SVHC substances

No SVHC substances with more than 0.1% w/w contained - SVHC list [REACH] as of 27.06.2024.

Does not contain Proposition 65 substances

No Proposition 65 substances included.

<https://www.P65Warnings.ca.gov/>

Free from Conflict Minerals

This product does not contain any substances designated as "conflict minerals" such as tantalum, tin, gold or tungsten from the Democratic Republic of Congo or adjacent countries.