

## Hinges • elongated on both sides

25165.1005



### Product Description

The different versions cover many applications that require a low load.

These metal hinges are characterised by their simple design and the different versions:

- without bores
- with bores
- with bores for countersunk screws

The version without bores can be assembled by welding or by inserting a specific drilling pattern.

### Material

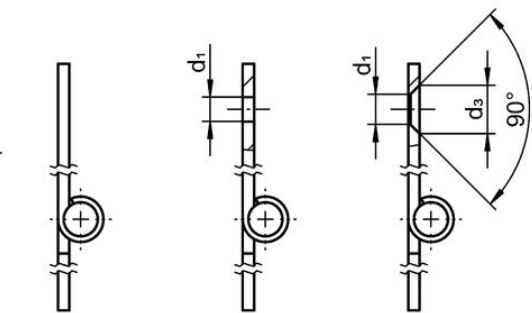
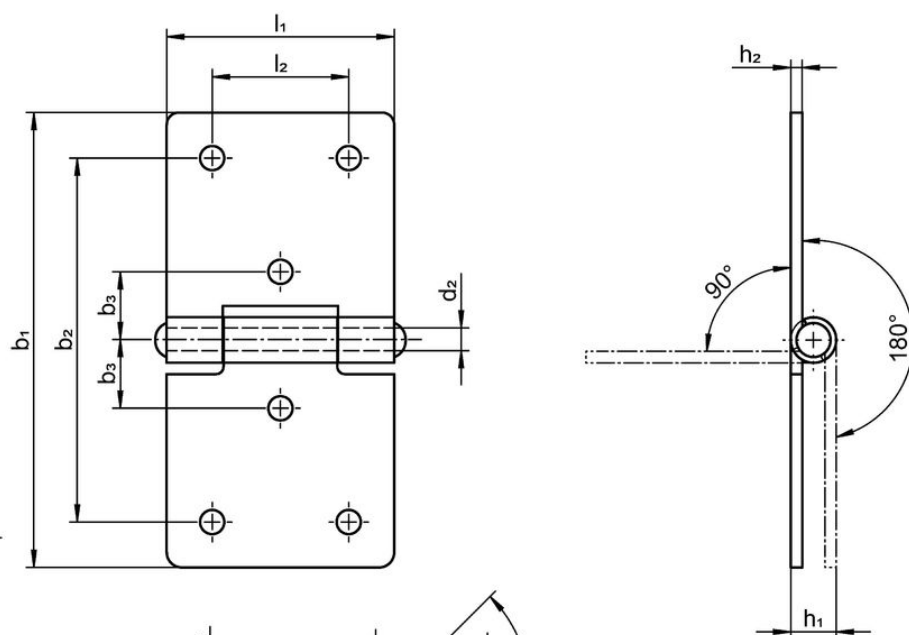
#### Body

- Steel, zinc-plated by galvanization, passivated

#### Axis

- Stainless steel 1.4301

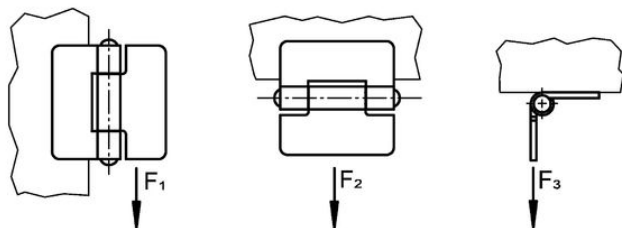
### Drawing



picture 1

picture 2

picture 3



Order information

| Dimensions                    |                |                |                |                |                |                     |                |                | Holding force       |                     |                     | [g] | Art. No.   |
|-------------------------------|----------------|----------------|----------------|----------------|----------------|---------------------|----------------|----------------|---------------------|---------------------|---------------------|-----|------------|
| b <sub>1</sub>                | l <sub>1</sub> | b <sub>2</sub> | b <sub>3</sub> | d <sub>1</sub> | d <sub>2</sub> | h <sub>1</sub><br>~ | h <sub>2</sub> | l <sub>2</sub> | F <sub>1</sub><br>~ | F <sub>2</sub><br>~ | F <sub>3</sub><br>~ |     |            |
| [mm]                          |                |                |                |                |                |                     |                |                | [N]                 |                     |                     |     |            |
| with bores – picture 2, Steel |                |                |                |                |                |                     |                |                |                     |                     |                     |     |            |
| 100                           | 50             | 80             | 15             | 5.2            | 6              | 10                  | 2              | 30             | 1200                | 1600                | 700                 | 98  | 25165.1005 |

Compliance

**RoHS compliant**

Compliant according to Directive 2011/65/EU and Directive 2015/863.

**Does not contain SVHC substances**

No SVHC substances with more than 0.1% w/w contained - SVHC list [REACH] as of 27.06.2024.

**Does not contain Proposition 65 substances**

No Proposition 65 substances included.

<https://www.P65Warnings.ca.gov/>

**Free from Conflict Minerals**

This product does not contain any substances designated as "conflict minerals" such as tantalum, tin, gold or tungsten from the Democratic Republic of Congo or adjacent countries.