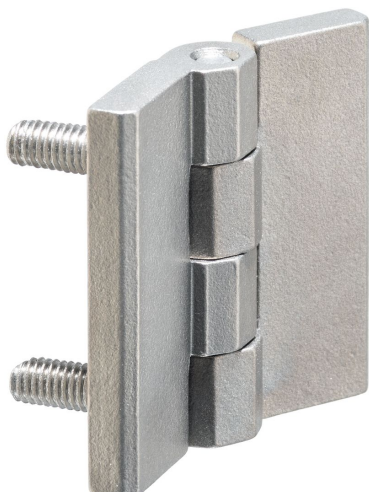


Hinges • with mounting thread

25160.0350



Product Description

These hinges are characterised by the compact, robust design and the integrated mounting threads.

Material

Grub Screw

- Stainless steel

Body

- Stainless steel 1.4308

Axis

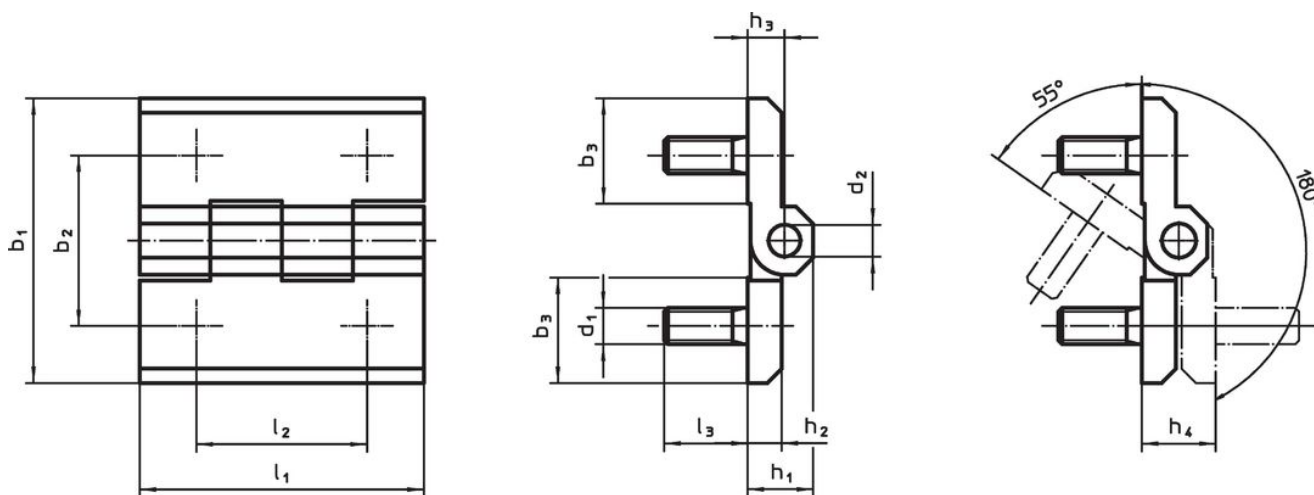
- Stainless steel

More information

Further products

- Spacer Plates, for hinges

Drawing



Order information

Dimensions												[g]	Art. No.	
b ₁	b ₂	b ₃	d ₁	d ₂	h ₁	h ₂	h ₃	h ₄ +0.5	l ₁	l ₂	l ₃			
[mm]														
Stainless steel														
40	25	14	M5	4	9	5	5.5	11	40	25	11	68	25160.0350	

Compliance

RoHS compliant

Compliant according to Directive 2011/65/EU and Directive 2015/863.

Does not contain SVHC substances

No SVHC substances with more than 0.1% w/w contained - SVHC list [REACH] as of 23.01.2024.

Does not contain Proposition 65 substances

No Proposition 65 substances included.

<https://www.P65Warnings.ca.gov/>

Free from Conflict Minerals

This product does not contain any substances designated as "conflict minerals" such as tantalum, tin, gold or tungsten from the Democratic Republic of Congo or adjacent countries.