

**Palm Grips • DIN 6335 grey cast iron**  
24620.0040



**Product Description**

These palm grips are manufactured according to DIN 6335. Sandblasted or tumbled.

**Material**

**Handle**

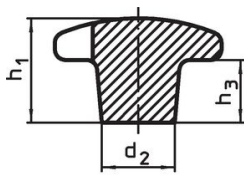
- Grey cast iron GG 20, bright

**More information**

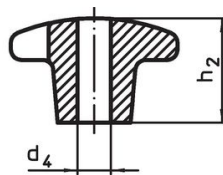
**Notes**

Grips with different bores or surface treatment can be obtained on request.

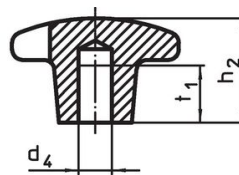
**Drawing**



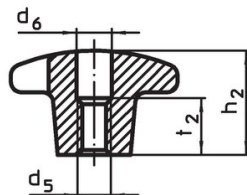
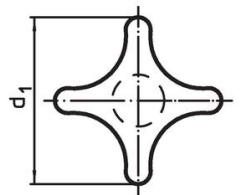
picture 1



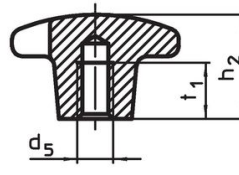
picture 2



picture 3



picture 4



picture 5

**Order information**

Dimensions				[g]	Art. No.
d <sub>1</sub>	d <sub>2</sub>	h <sub>1</sub>	h <sub>3</sub>		
raw part, form A – picture 1					
40	14	26	14	69	24620.0040

**Compliance**

**RoHS compliant**

Compliant according to Directive 2011/65/EU and Directive 2015/863.

**Does not contain SVHC substances**

No SVHC substances with more than 0.1% w/w contained - SVHC list [REACH] as of 23.01.2024.

**Does not contain Proposition 65 substances**

No Proposition 65 substances included.  
<https://www.P65Warnings.ca.gov/>

**Free from Conflict Minerals**

This product does not contain any substances designated as "conflict minerals" such as tantalum, tin, gold or tungsten from the Democratic Republic of Congo or adjacent countries.