

## Seating Pins • partially DIN 6321 (old norm)

22630.0130



### Product Description

To be used as feet and stops.  
The bearing surface has no centre.

### Material

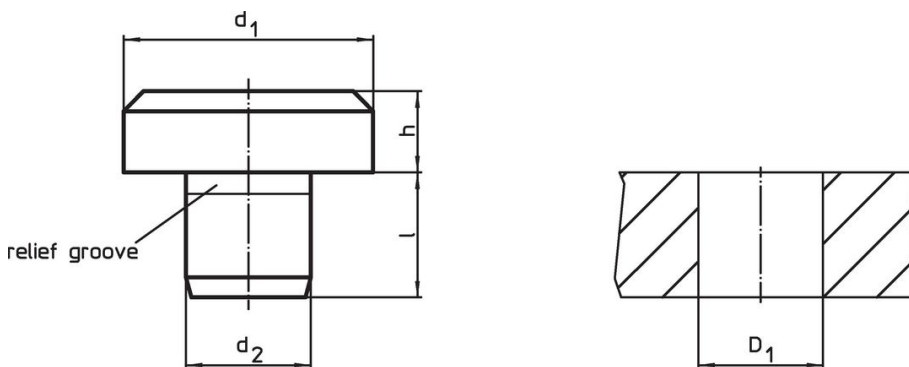
- Tool steel, hardened, ground

### More information

### Further products

- Seating Pins, DIN 6321

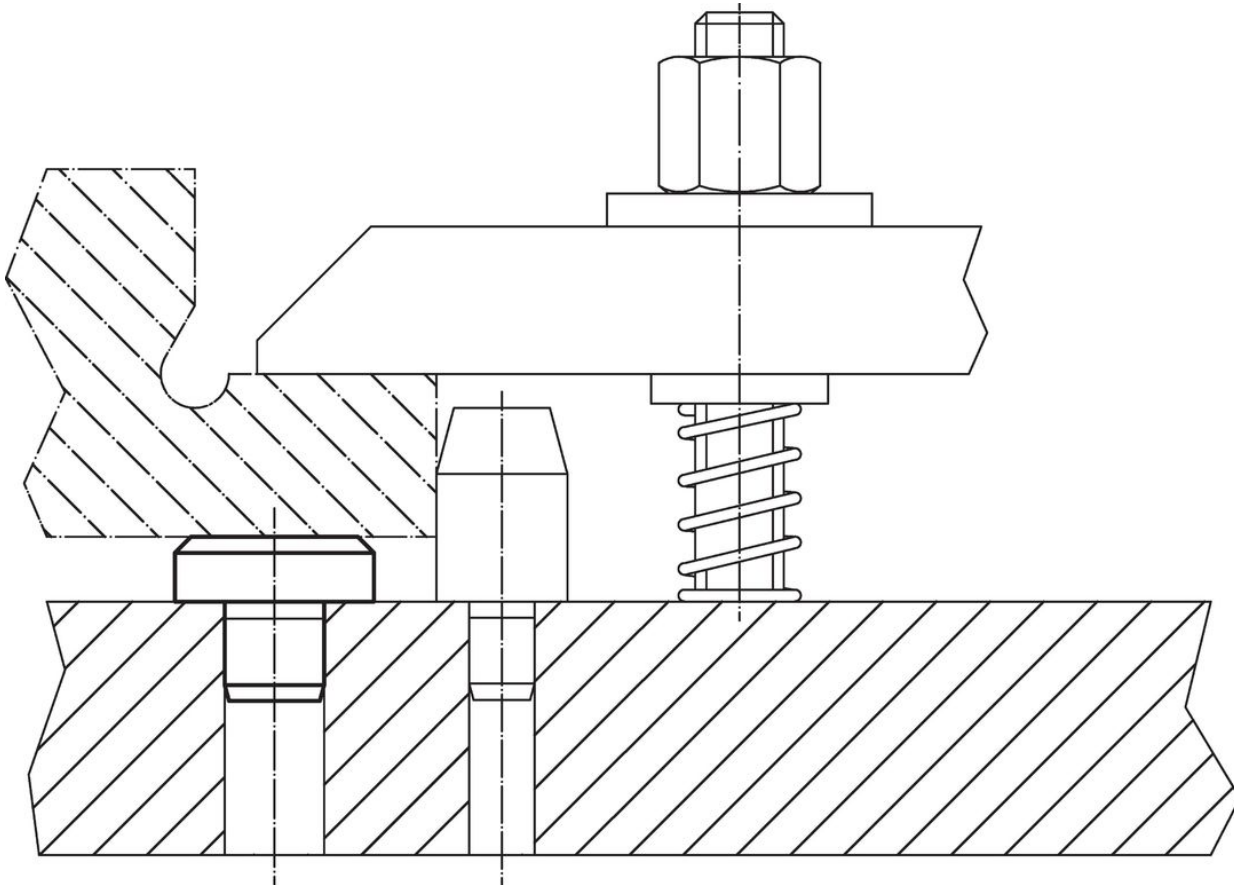
### Drawing



### Order information

d <sub>1</sub>	Dimensions			l	Location hole	[g]	Art. No.
	h h9	d <sub>2</sub> n6	[mm]		D <sub>1</sub> H7 [mm]		
<b>intermediate sizes</b>							
20	6	10		12	10	21	22630.0130

## Application example



## Compliance

### RoHS compliant

Compliant according to Directive 2011/65/EU and Directive 2015/863.

### Does not contain SVHC substances

No SVHC substances with more than 0.1% w/w contained - SVHC list [REACH] as of 23.01.2024.

### Does not contain Proposition 65 substances

No Proposition 65 substances included.

<https://www.P65Warnings.ca.gov/>

### Free from Conflict Minerals

This product does not contain any substances designated as "conflict minerals" such as tantalum, tin, gold or tungsten from the Democratic Republic of Congo or adjacent countries.