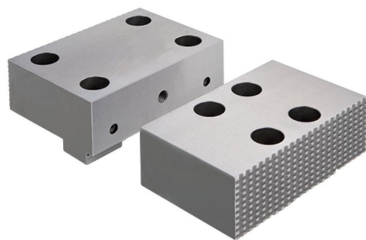


Base Jaws · hard

1701.120



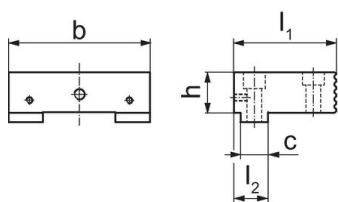
Product Description

- One side smooth and ground, one side serrated
- Additional threads for parallels and for mounting the interchangeable jaws (Art. No. 1701.250-1701.280) on the smooth side
- Mountings for click system (Art. No. 1701.190-1701.200) on both sides of the jaw

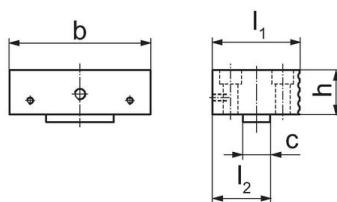
Material

- Steel, hardened

Drawing



picture 1

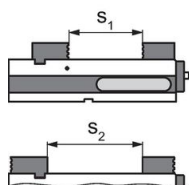


picture 2

Order information

Jaw width [mm]	Dimensions					[kg]	Art. No.
	b	l ₁	l ₂ [mm]	h	c		
Jaw, fixed – picture 1							
125	124.4	88	30	39.5	24	3	1701.120

Application example



	MS 125-S	MS 125-M	MS 125-L
Clamping width s ₁	0 - 58	0 - 173	0 - 308
Clamping width s ₂	0 - 111	50 - 225	4 - 361

Compliance

RoHS compliant

Compliant according to Directive 2011/65/EU and Directive 2015/863.

Does not contain SVHC substances

No SVHC substances with more than 0.1% w/w contained - SVHC list [REACH] as of 27.06.2024.

Does not contain Proposition 65 substances

No Proposition 65 substances included.

<https://www.P65Warnings.ca.gov/>

Free from Conflict Minerals

This product does not contain any substances designated as "conflict minerals" such as tantalum, tin, gold or tungsten from the Democratic Republic of Congo or adjacent countries.