

## Mounting Elements

1512.100

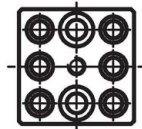
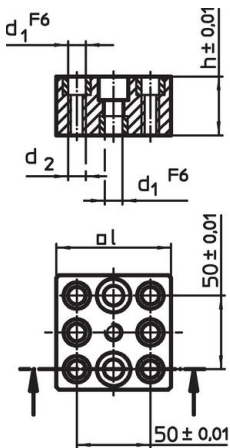


### Product Description

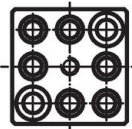
#### Material

- Grey cast iron, ground

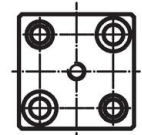
### Drawing



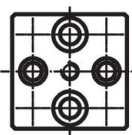
1512.000



1512.100



1612.200



1612.400

### Order information

System	Dimensions				[g]	Art. No.
	l	h [mm]	d <sub>1</sub>	d <sub>2</sub>		
L12	74.8	40	12	M12	1287	1512.100

### Compliance

#### RoHS compliant

Compliant according to Directive 2011/65/EU and Directive 2015/863.

#### Does not contain SVHC substances

No SVHC substances with more than 0.1% w/w contained - SVHC list [REACH] as of 23.01.2024.

#### Does not contain Proposition 65 substances

No Proposition 65 substances included.

<https://www.P65Warnings.ca.gov/>

#### Free from Conflict Minerals

This product does not contain any substances designated as "conflict minerals" such as tantalum, tin, gold or tungsten from the Democratic Republic of Congo or adjacent countries.